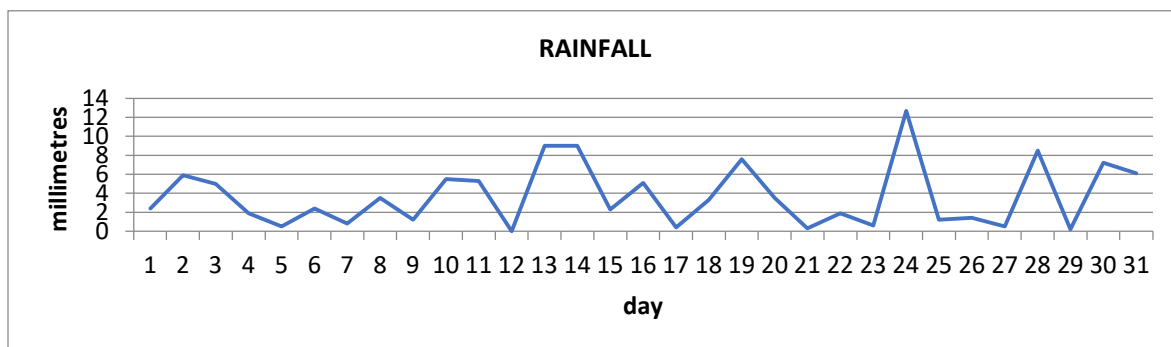
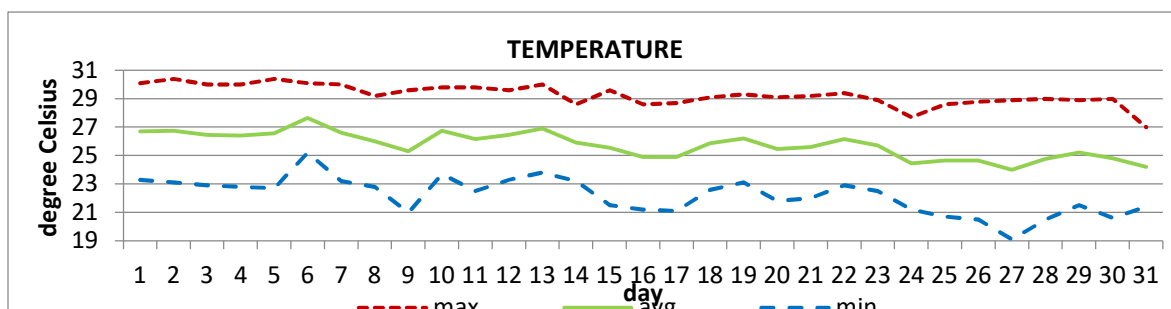


**MONTHLY CLIMATE SUMMARY**
**DOUGLAS-CHARLES AIRPORT**

December 2021



Total	115.2mm / 4.54in
Normal	219.2mm / 8.63in
Daily average	3.7mm / 0.15in



Average	25.7°C / 79°F
Normal	25.8°C / 79°F

**OTHER**

Parameter	Month	Date	Normal	MonthlyHistorical
<b>Relative Humidity</b>	81%			
<b>Cloud Cover</b>	6 oktas			
<b>Rainfall</b>				
Rainfall Total	115.2mm / 4.54in			Max: 631.4mm / 24.86in (2001) Min: 91.2mm / 3.59in (2009)
Cumulative yearly total	2030.8mm / 79.95in			
Maximum	12.7mm / 0.50in	24 <sup>th</sup>		
Number of rainfall days (≥1mm)	23			
<b>Temperature</b>				
Actual Maximum	30.4°C / 86°F	2 <sup>nd</sup> , 5 <sup>th</sup>		31.1°C / 88°F (1987)
Actual Minimum	19.1°C / 66°F	27 <sup>th</sup>		16.9°C / 63°F (1991)
Mean Maximum	29.3°C / 84°F		28.9°C / 84°F	29.8°C / 86°F (1997, 2003)
Mean Minimum	22.2°C / 72°F		22.7°C / 73°F	20.6°C / 70°F (1992)
<b>Sunshine Hours</b>				
Average daily duration	7hrs 24mins		6hrs 30mins	
Highest daily	9hrs 36mins	19 <sup>th</sup>		
Percentage received	66%			
<b>Wind</b>				
Direction	110° (East south east)			
Speed	8kts / 15km/h			
Maximum Gust	33kts / 61km/h	16 <sup>th</sup> , 17 <sup>th</sup>		
<b>Sea-Level Pressure</b>	1054.5mbs / 29.99inHg		1013mbs	

**REMARKS:** climatological normal rainfall and temperature- 30-year average (1991-2020)

Rainfall was way less than usual. Mean temperature was normal with the usual daytime highs but cooler than usual night-time lows. High pressure systems were dominant for the first 3 weeks of the month while troughs and shearlines dominated the last week. Hazy and breezy conditions were observed.

Doc.ID: PR-CL-PD-R001

Revision No. 000

Doc. Implementation: December 2012