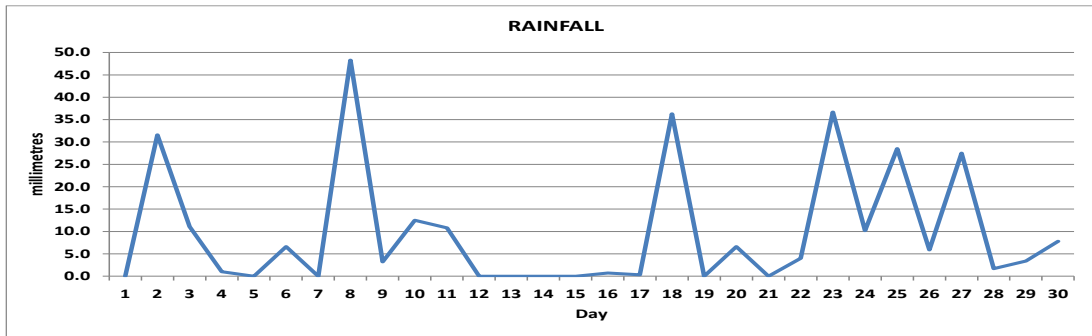
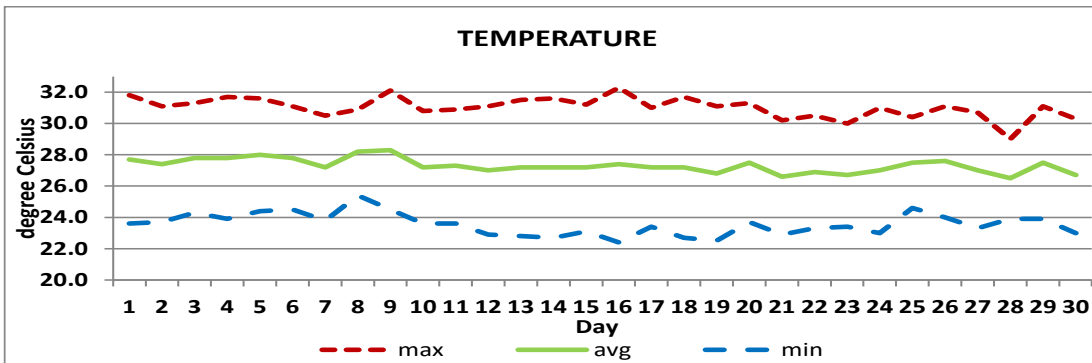


MONTHLY CLIMATE SUMMARY
DOUGLAS - CHARLES AIRPORT
November 2024


Total	294.7 mm / 11.6in
Normal	348.6mm / 13.72in
Daily average	9.82mm / 0.39in



Average	27.3°C / 81°F
Normal	26.5°C / 81°F

OTHER

Parameter	Month	Date	Normal	Monthly Historical
Relative Humidity	87%			
Cloud Cover	6 oktas			
Rainfall				Max: 912.0mm / 35.91in (2004)
Rainfall Total	294.7 mm / 11.6in			Min: 97.2mm / 3.83in (1983)
Cumulative yearly total	2,353.8 mm / 92.67 in			
Maximum	48.3 mm / 1.90 in	08 th		
Number of rainfall days (≥1mm)	19			
Temperature				
Actual Maximum	32.3°C / 90°F	16 th		32.8°C / 91°F (1999)
Actual Minimum	22.4°C / 72°F	16 th		18.8°C / 66°F (2019)
Mean Maximum	31.0°C / 88°F		29.8°C / 86°F	31.0°C / 88°F (2024)
Mean Minimum	23.6°C / 75°F		23.3°C / 73°F	21.3°C / 70°F (1992)
Sunshine Hours				
Average daily duration	6hrs 42mins		6hrs 24mins	
Highest daily	9hrs 48mins	04 th		
Percentage received	59%			
Wind				
Direction	130° (South east)			
Speed	5kts / 09km/h			
Maximum Gust	31kts / 57km/h	25 th		
Sea-Level Pressure	1012.6mbs / 29.91inHg		1013mbs	

REMARKS: climatological normal rainfall and temperature- 30-year average (1991-2020)

The total rainfall was normal with warmer than usual average maximum and mean temperature. The usual nighttime temperatures were observed. The Atlantic high-pressure system and trough systems dominated the weather pattern. Dust haze was observed in the first two weeks of the month. Eight (8) thunderstorm days were recorded. Waterspout and funnel cloud were observed in the vicinity on the 10th.