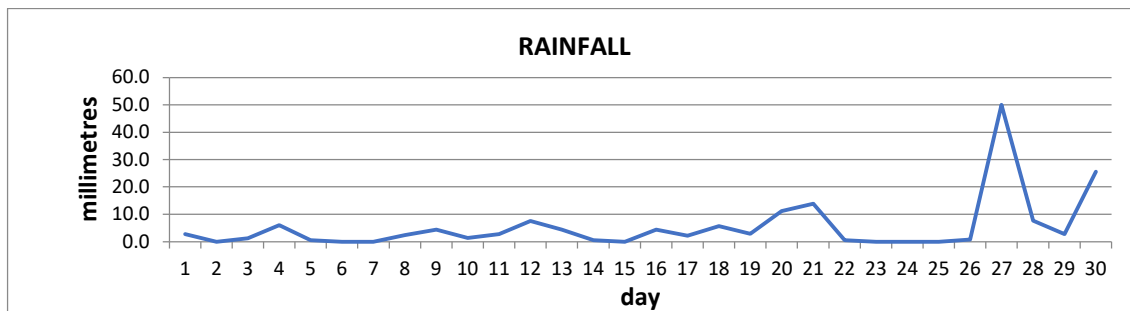
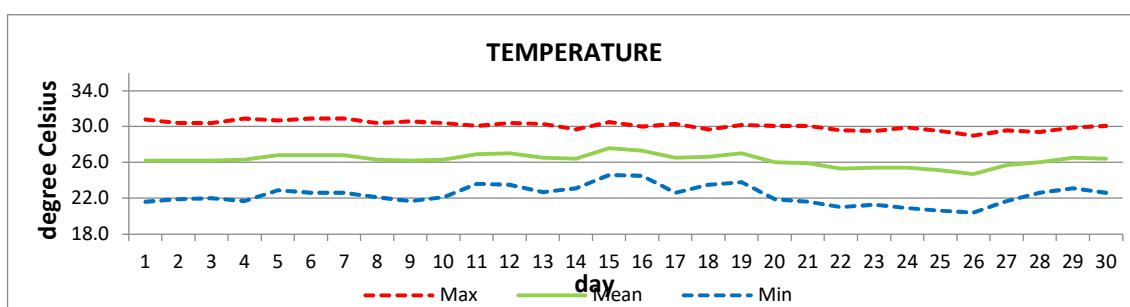


MONTHLY CLIMATE SUMMARY
DOUGLAS-CHARLES AIRPORT

November 2021



Total	161.5mm / 6.36in
Normal	348.6mm / 13.72in
Daily average	5.4mm / 0.212in



Average	26.3°C / 79°F
Normal	26.5°C / 81°F

OTHER

Parameter	Month	Date	Normal	MonthlyHistorical
Relative Humidity	83%			
Cloud Cover	5 oktas			
Rainfall				
Rainfall Total	161.5mm / 6.36in			Max: 912.0mm / 35.91in (2004) Min: 97.2mm / 3.83in (1983)
Cumulative yearly total	1915.6mm / 103.10in			
Maximum	50.1mm / 1.97in	27 th		
Number of rainfall days (≥1mm)	19			
Temperature				
Actual Maximum	30.9°C / 88°F	4 th 6 th 7 th		33.5°C / 93°F (1999)
Actual Minimum	20.4°C / 68°F	26 th		17.2°C / 63°F (1995)
Mean Maximum	30.1°C / 86°F		29.8°C / 86°F	32.8°C / 91°F (1999)
Mean Minimum	22.4°C / 72°F		23.3°C / 73°F	18.8°C / 66°F (2019)
Sunshine Hours				
Average daily duration	7hrs 54mins		6hrs 24mins	
Highest daily	10hrs 00mins	25 th		
Percentage received	69%			
Wind				
Direction	120° (East south east)			
Speed	6kts / 11km/h			
Maximum Gust	28kts / 52km/h	30 th		
Sea-Level Pressure	1014.5mbs / 29.96inHg		1013mbs	

REMARKS: climatological normal rainfall and temperature- 30-year average (1991-2020)

Rainfall was way less than usual. Mean temperature was normal with the usual daytime highs but cooler than usual night-time lows. High pressure systems were dominant for most of the month. Surface troughs affected the island during the last week which resulted in localized flooding on the 28th. Hazy and breezy conditions were observed.