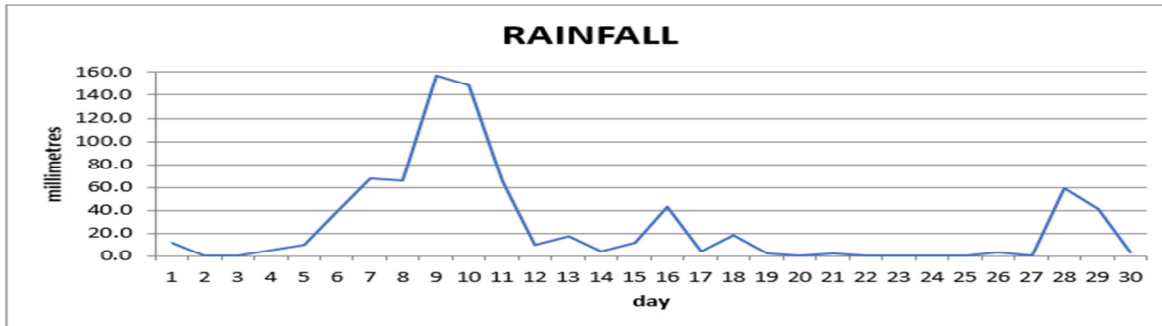
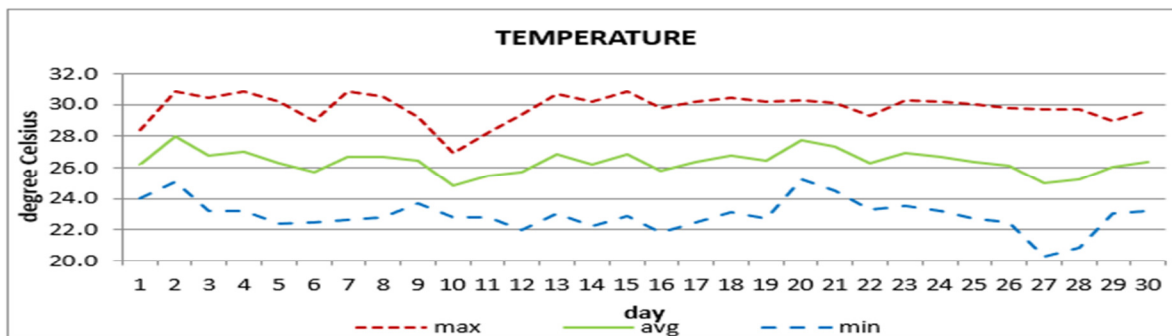


**DOUGLAS - CHARLES AIRPORT  
November 2020**



|               |                   |
|---------------|-------------------|
| Total         | 789.5mm / 31.08in |
| Normal        | 348.6mm / 13.72in |
| Daily average | 26.3mm / 1.04in   |



|         |               |
|---------|---------------|
| Average | 26.4°C / 79°F |
| Normal  | 26.5°C / 81°F |

**OTHER**

| Parameter                      | Month                 | Date   | Normal        | Monthly Historical            |
|--------------------------------|-----------------------|--|---------------|-------------------------------|
| <b>Relative Humidity</b>       | 86%                   |  |               |                               |
| <b>Cloud Cover</b>             | 6 oktas               |  |               |                               |
| <b>Rainfall</b>                |                       |  |               |                               |
| Rainfall Total                 | 789.5mm / 31.08in     |  |               |                               |
| Cumulative yearly total        | 2618.8mm / 103.10in   |  |               | Max: 912.0mm / 35.91in (2004) |
| Maximum                        | 156.7mm / 6.17in      | 9th  |               | Min: 97.2mm / 3.83in (1983)   |
| Number of rainfall days (≥1mm) | 22                    |  |               |                               |
| <b>Temperature</b>             |                       |  |               |                               |
| Actual Maximum                 | 30.8°C / 88°F         | 2 <sup>nd</sup> 4 <sup>th</sup> 7 <sup>th</sup> 15 <sup>th</sup> |               | 32.8°C / 91°F (1999)          |
| Actual Minimum                 | 20.3°C / 68°F         | 27 <sup>th</sup>   |               | 18.8°C / 66°F (2019)          |
| Mean Maximum                   | 29.8°C / 86°F         |  | 29.8°C / 86°F | 30.7°C / 88°F (1997, 2009)    |
| Mean Minimum                   | 22.9°C / 73°F         |  | 23.3°C / 73°F | 21.3°C / 70°F (1992)          |
| <b>Sunshine Hours</b>          |                       |  |               |                               |
| Average daily duration         | 5hrs 42mins           |  | 6hrs 24mins   |                               |
| Highest daily                  | 09hrs 42mins          | 15 <sup>th</sup> 27 <sup>th</sup>                                |               |                               |
| Percentage received            | 53%                   |  |               |                               |
| <b>Wind</b>                    |                       |  |               |                               |
| Direction                      | 130° (South east)     |  |               |                               |
| Speed                          | 6kts / 11km/h         |  |               |                               |
| Maximum Gust                   | 30kts / 56km/h        | 1 <sup>st</sup>  |               |                               |
| <b>Sea-Level Pressure</b>      | 1014.1mbs / 29.95inHg |  | 1013mbs       |                               |

**REMARKS:** climatological normal rainfall- 30-year average (1982-2011) and average temperature revised - 21-year average (1990-2010)

Wetter than usual conditions with the usual daytime temperatures and cooler night-time temperatures were recorded. A series of trough systems and the Atlantic high-pressure system were the dominant features. Flooding and landslides across the north to central and south east areas on the 10<sup>th</sup>. Flooding in the Portsmouth area on the 29<sup>th</sup>. Breezy conditions were observed.