



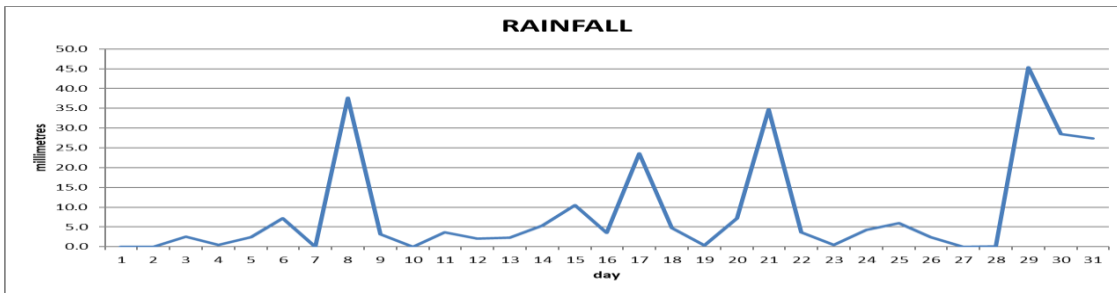
Tel: (767) 611 4490/ 445 7849

Email: www.metoffice@cwdom.dm

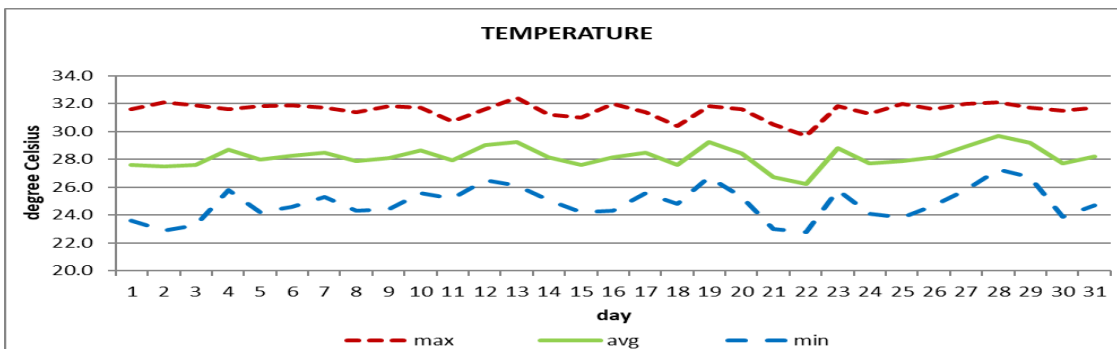
Website: www.weather.gov.dm

DOUGLAS - CHARLES AIRPORT

August 2020



Total	269.7mm / 10.62in
Normal	255.4mm / 10.06in
Daily average	8.7mm / 0.34in



Average	28.2°C / 82°F
Normal	27.8°C / 82°F

OTHER

Parameter	Month	Date	Normal	Monthly Historical
relative humidity	82%			
cloud cover	5 oktas			
Rainfall				
Rainfall total	269.7mm / 10.62in			Max: 457.3mm / 18.00in (2010) Min: 80.1mm / 3.15in (1984)
Cumulative yearly total	1071.1mm / 42.17in			
Maximum	45.4mm / 1.79in	29 th		
Number of rainfall days(≥1mm)	22			
Temperature				
Actual Maximum	32.4°C / 90°F	13 th		34.3°C / 93°F (1996)
Actual Minimum	22.8°C / 73°F	22 nd		20.9°C / 70°F (1992)
Mean Maximum	31.5°C / 90°F		30.6°C / 88°F	31.8°C / 90°F (2006, 2010)
Mean Minimum	24.9°C / 77°F		24.7°C / 77°F	23.0°C / 75°F (1992)
sunshine hours				
average daily duration	8hrs 00mins		8hrs 48mins	
highest daily	11hrs 18mins	10 th		
percentage received	65%			
Wind				
direction	120° (East south east)			
speed	7kts / 13km/h			
maximum gust	32kts / 59km/h	21 st		
sea-level pressure	1014.6mbs / 29.96inHg		1013mbs	

REMARKS: climatological normal rainfall- 30-year average (1982-2011) and average temperature revised - 21-year average (1990-2010)

The rainfall total was above normal. Daytime highs and night-time lows were warmer than average. The Atlantic high-pressure system and tropical waves dominated the weather conditions. Tropical Storm Josephine (15th) and Laura (21st - 22nd) affected the island. Thunderstorms were recorded on 4 days.