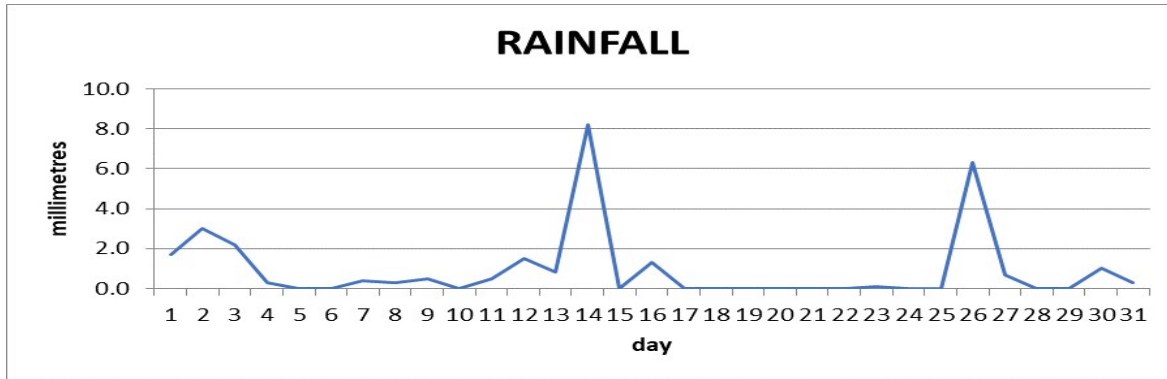
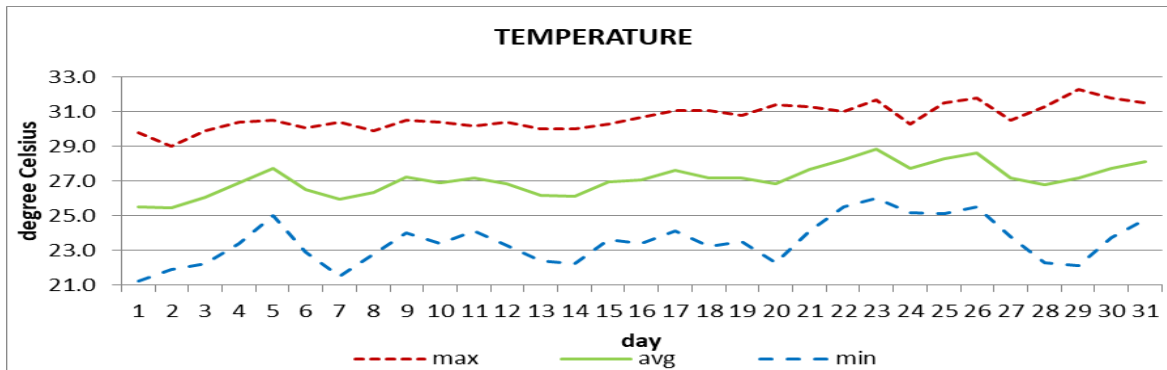


MONTHLY CLIMATE SUMMARY DOUGLAS - CHARLES AIRPORT

May 2021



Total	29.1mm/1.1in
Normal	203.3mm/ 8.0in
Daily average	0.9mm /0.04in



Average	27.1°C/81°F
Normal	27.1°C/ 81°F

OTHER

Parameter	Month	Date	Normal	Monthly Historical
Relative humidity	75%			
Cloud cover	6 oktas			
Rainfall				
Rainfall total	29.1mm/ 1.1in			Max: 815.7mm / 32.11in (1987) Min: 12.1mm / 0.49in (2001)
Cumulative yearly total	559.9mm/ 22.04in			
Maximum	8.2mm/ 0.32in	14 th		
Number of rainfall days(≥1mm)	8			
Temperature				
Actual maximum	32.3°C / 90°F	29 th		33.0°C/ 91°F (2010)
Actual minimum	21.2°C / 70°F	01 st		19.8°C/ 84°F (1984/86)
Mean maximum	30.7°C / 88°F		30.1°C/ 86°F	31.3°C / 88°F (2005)
Mean minimum	23.5°C / 75°F		24.0°C/ 75°F	23.0°C / 73°F (2019)
Sunshine hours				
Average daily duration	09hrs 36mins		8hrs	
Highest daily	11hrs 48mins	29 th		
Percentage received	75%			
Wind				
Direction	120° (east south east)			
Speed	09kts / 17km/h			
Maximum gust	28kts / 52km/h	10 th		
Sea-level pressure	1017.0mbs / 30.03inHg		1013mbs	

REMARKS: Climatological normal -30-year average (1991-2020)

Second driest May on record. (Driest - 2001 with 12.1mm). Daytime highs were slightly warmer than usual with cooler than usual nighttime temperatures. The Atlantic high-pressure system was the dominant feature. Gusty winds and dust haze were recorded through out.