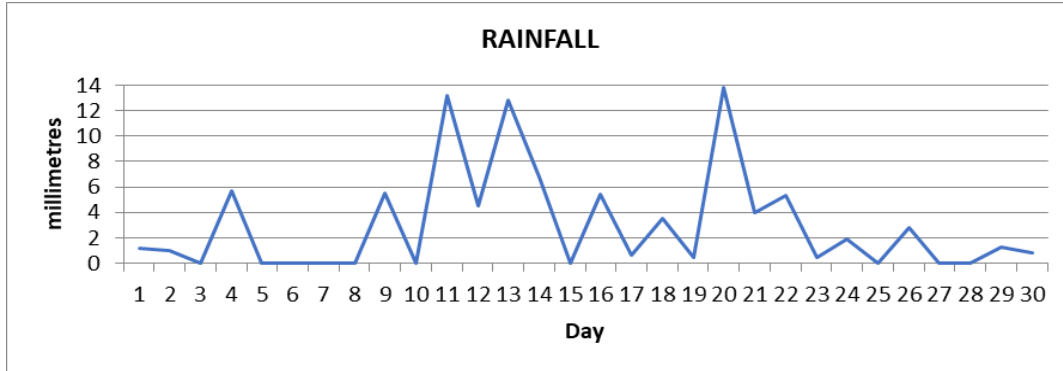
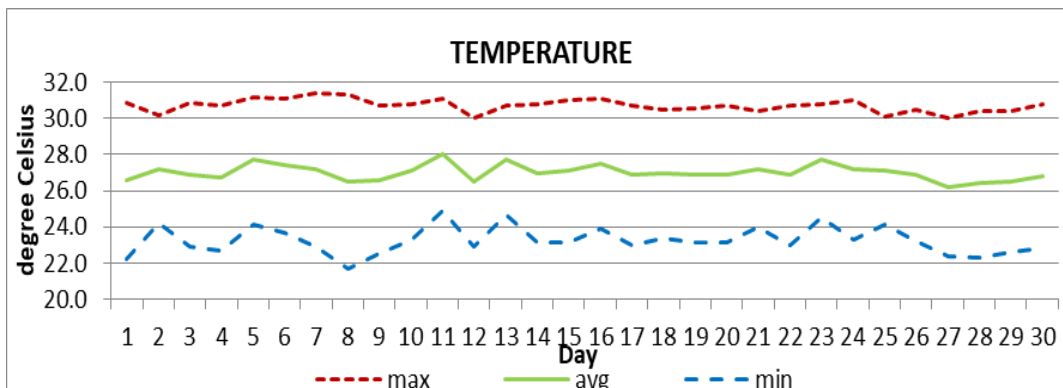


**MONTHLY CLIMATE SUMMARY  
DOUGLAS - CHARLES AIRPORT  
APRIL 2024**



Total	91.1mm / 3.59in
Normal	179.3mm / 7.06in
Daily average	3.8mm / 0.15in



Average	27.0°C / 81°F
Normal	26.2°C / 79°F

**OTHER**

Parameter	Month	Date	Normal	Monthly Historical
Relative humidity	80%			
Cloud cover	5 oktas			
Rainfall				
Rainfall total	91.1mm / 3.59in			Max: 773.1mm / 30.4in (1981) Min: 18.8mm / 0.74in (1997)
Cumulative yearly total	474.7mm / 18.69in			
Maximum	13.8 / 0.54in	20 <sup>th</sup>		
Number of rainfall days(≥1mm)	16			
Temperature				
Actual maximum	31.4°C / 88°F	7 <sup>TH</sup>		33.1°C / 91°F (2005) 18.0°C / 64°F (1985)
Actual minimum	21.7°C / 72°F	8 <sup>TH</sup>		
Mean maximum	30.7°C / 88°F		29.4°C / 84°F	31.3°C / 88°F (2005) 21.5°C / 70°F (1985)
Mean minimum	23.3°C / 73°F		23.0°C / 73°F	
Sunshine hours				
Average daily duration	9hrs 6mins		8hrs 12mins	
Highest daily	11hrs 36mins	27 <sup>th</sup>		
Percentage received	73%			
Wind				
Direction	120° (east south east)			
Speed	07kts / 13km/h			
Maximum gust	27kts / 50km/h	12 <sup>th</sup>		
Sea-level pressure	1015.2mbs / 29.98inHg		1013mbs	

REMARKS: Climatological normal -30-year average (1991-2020)

The total rainfall for the month was slightly below normal. Temperatures were warmer than usual. High pressure system, weak unstable conditions and trough system affected the island. Dust haze and gusty winds were recorded.