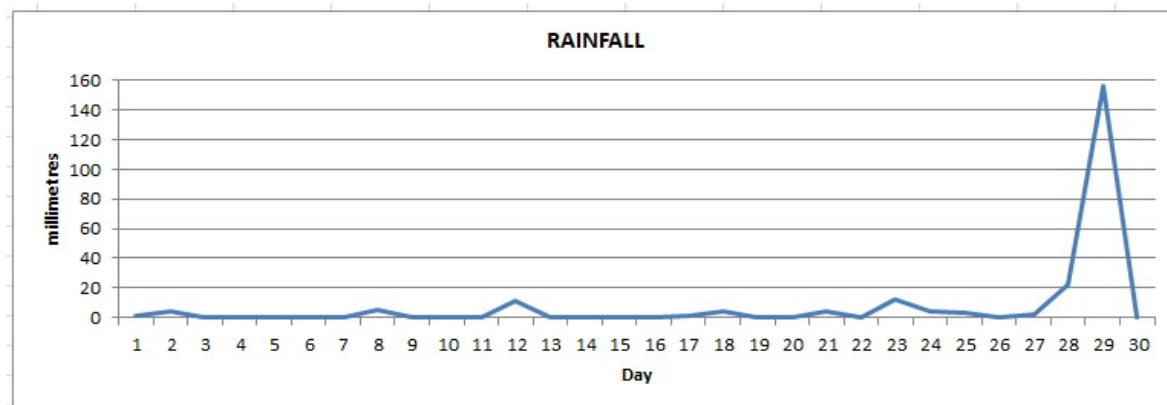
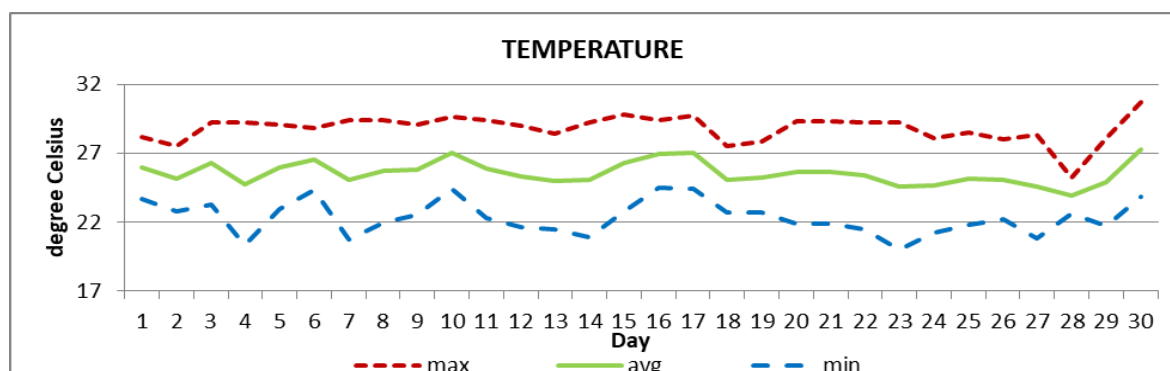


DOUGLAS - CHARLES AIRPORT

APRIL 2022



Total	234.5mm / 9.23in
Normal	179.3mm / 7.06in
Daily average	7.82mm / 0.31in



Average	25.6°C / 79°F
Normal	26.2°C / 79°F

OTHER

Parameter	Month	Date	Normal	Monthly Historical
Relative humidity	77%			
Cloud cover	6 oktas			
Rainfall				
Rainfall total	234.5mm / 9.23in			Max: 772.9mm / 30.43in (1981) Min: 18.8mm / 0.74in (1997)
Cumulative yearly total	598.5mm / 23.56in			
Maximum	156.0mm / 6.14in	29 th		
Number of rainfall days(≥1mm)	13			
Temperature				
Actual maximum	30.7°C / 88°F	30 th		33.1°C / 91°F (2005)
Actual minimum	20.0°C / 68°F	23 rd		18.0°C / 64°F (1985)
Mean maximum	28.8°C / 84°F		29.5°C / 86°F	31.3°C / 88°F (2005)
Mean minimum	22.3°C / 72°F		22.9°C / 73°F	21.5°C / 72°F (1985)
Sunshine hours				
Average daily duration	7hrs 30mins		8hrs 12mins	
Highest daily	11hrs 6mins	14 th		
Percentage received	60%			
Wind				
Direction	110° (east south-east)			
Speed	8kts / 15km/h			
Maximum gust	28kts / 52km/h	19 th		
Sea-level pressure	1015.7mbs / 29.99inHg		1013mbs	

REMARKS: Climatological normal -30-year average (1991-2020)

The rainfall total was above normal, with more than half recorded on the 29th. Air temperatures were cooler than usual with cooler than usual daytime highs and nighttime lows. The Atlantic high-pressure system and trough systems were the dominant features throughout the month. Gusty winds and dust haze were recorded.