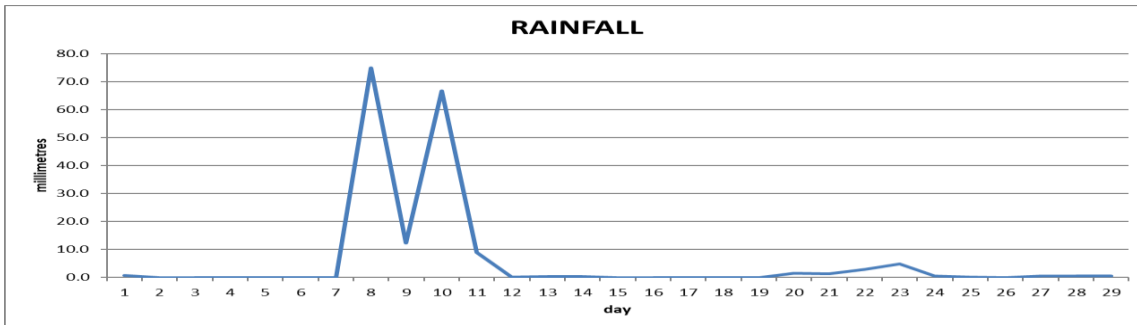
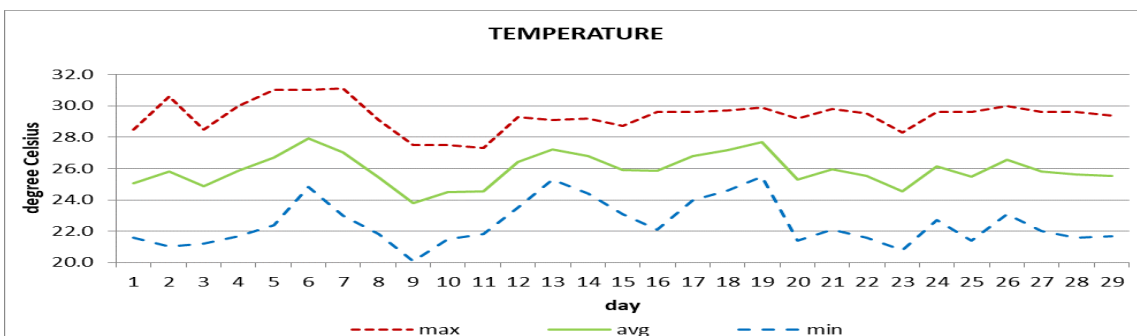


MONTHLY CLIMATE SUMMARY
DOUGLAS - CHARLES AIRPORT
February 2024


Total	177.4mm / 6.98in
Normal	85.1mm / 3.35 in
Daily average	6.1 mm / 0.24in



Mean	25.9°C / 79°F
Normal	25.3°C / 77°F

OTHER

Parameter	Month	Date	Normal	Monthly Historical
Relative humidity	83%			
Cloud cover	5 oktas			
Rainfall				
Rainfall total	177.4mm / 6.98mm			Max: 196.6mm / 7.74in (1989) Min: 4.2mm / 0.17in (2010)
Cumulative yearly total	272.7mm / 10.73in			
Daily maximum	75.0mm / 2.96in	8 th		
Number of rainfall days(≥1mm)	8			
Temperature				
Actual maximum	31.1°C / 88°F	7 th		31.9°C / 90°F (1998)
Actual minimum	20.1°C / 68°F	9 th		17.0°C / 63°F (1988)
Mean maximum	29.4°C / 84°F		28.5°C / 84°F	29.8°C / 86°F (2010)
Mean minimum	22.5°C / 73°F		22.1°C / 72°F	20.4°C / 68°F (1986)
Sunshine hours				
Average daily duration	7hrs 30mins		7hrs 30mins	
Highest daily	10hrs 06mins	17 th		
Percentage received	65%			
Wind				
Direction	140° (south east)			
Speed	06kts / 11km/h			
Maximum gust	23kts / 43km/h	7 th , 27 th		
Sea-level pressure	1016.1mbs / 30.01inHg		1013mbs	

REMARKS: Climatological normal -30-year average (1991-2020)

The rainfall total recorded for the month was above normal. Temperatures were warmer than usual. Dust haze and gusty winds were prevalent throughout the month. The Atlantic high-pressure system and trough systems were the dominant features.