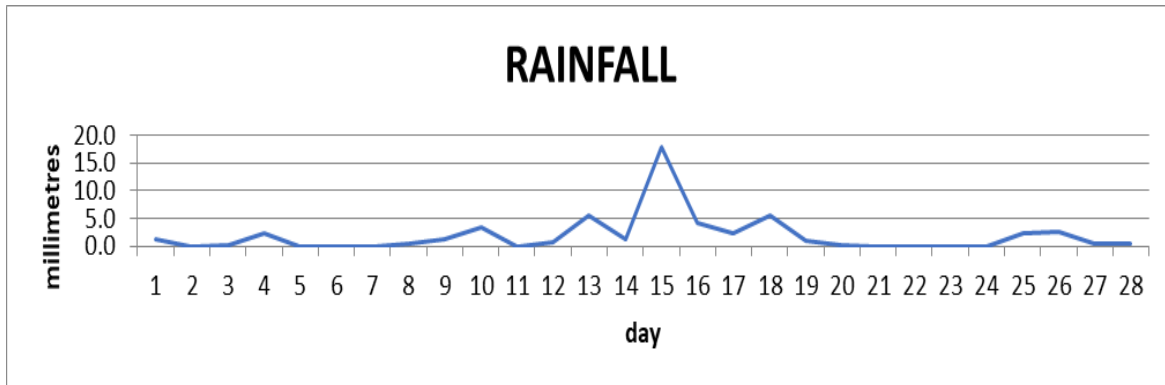
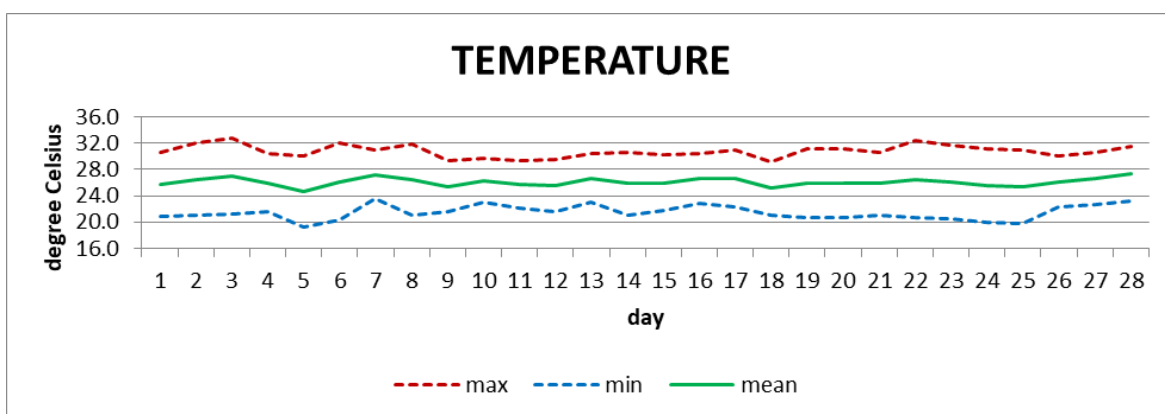


MONTHLY CLIMATE SUMMARY

CANEFIELD AIRPORT February 2022



Total	52.1mm/ 2.05in
Normal	67.3mm/ 2.65in
Daily average	1.9mm/ 0.07in



Average	26.1°C/ 79°F
Normal	25.7°C/ 79°F

OTHER

Parameter	Month	Date	Average	Monthly Historical
Relative humidity	64%			
Cloud cover	4 oktas			
Rainfall				
Rainfall total	52.1mm/ 2.05in			Max: 199.2mm/ 7.84in (2018)
Cumulative yearly total	93.8mm/ 3.69in			Min: 0.4mm/ 0.02in (2010)
Maximum	17.9mm/ 0.70in	15 th		
Number of rainfall days(≥1mm)	12			
Temperature				
Actual maximum	32.7°C/ 91°F	3 rd		32.5°C/ 91°F (2010)
Actual minimum	19.8°C/ 68°F	25 th		18.0°C/ 64°F (2008)
Mean maximum	30.8°C / 88°F		29.7°C/ 86°F	30.9°C/ 88°F (1998, 2010)
Mean minimum	21.5°C / 72°F		21.7°C/ 72°F	20.9°C/ 70°F (1990, 2009)
Wind				
Direction	120° (east south east)			
Speed	04kts/ 07km/h			
Maximum gust	28kts/ 52km/h	10 th , 11 th		
Sea-level pressure	1014.5mbs/ 29.96inHg		1013mbs	

REMARKS: Climatological normal -30-year average (1991-2020)

Rainfall was slightly less than usual. Daylight maximum temperatures were warmer than usual while night-time minimum temperatures were as cool as usual. The Atlantic high-pressure system and surface troughs were the dominant features, though most rainfall was attributed to trade wind moisture on brisk winds. Slight dust haze was observed on a few days.