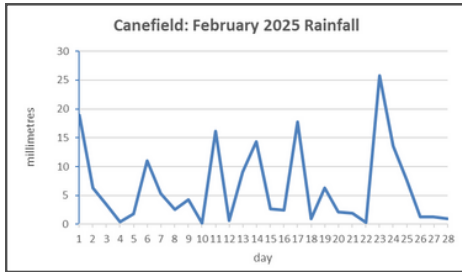
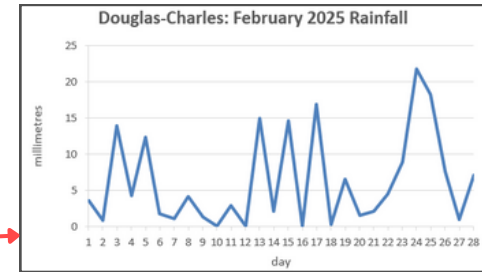
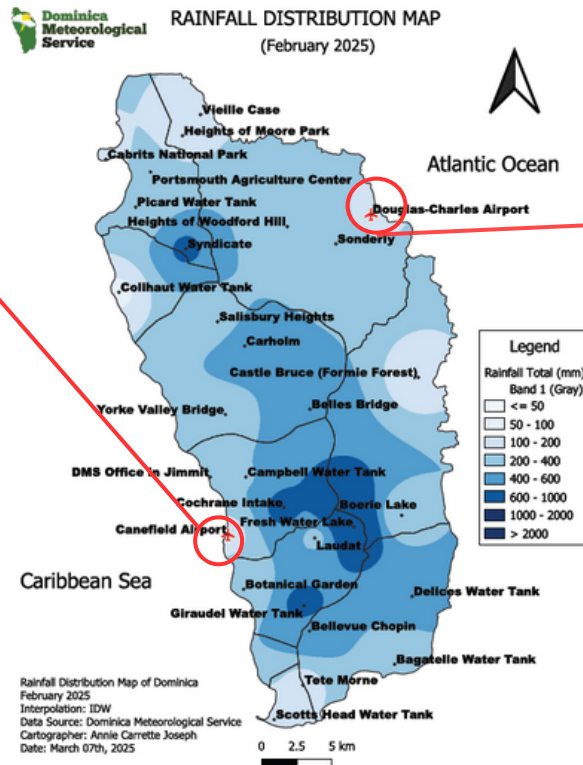


Rainfall



Total= 179.5mm/ 7.07in
Daily max: 25.8mm/ 1.02in (23rd)



Total= 174.1mm/ 6.85in
Daily max: 21.8mm/ 0.86in (24th)

3 Driest Stations

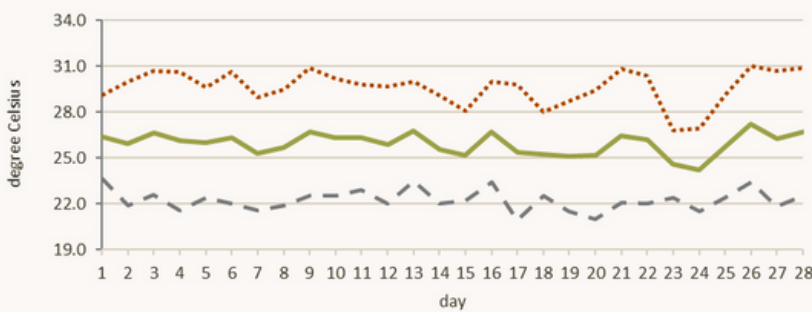
Colihaut	93.0mm/ 3.66in
Castle Bruce	133.4mm/ 5.25in
Scottshead	140.2mm/ 5.52in

3 Wettest Stations

Freshwater Lake	933.0mm/ 36.73in
Boeri Lake	840.2mm/ 33.08in
Cochrane	637.4mm/ 25.09in

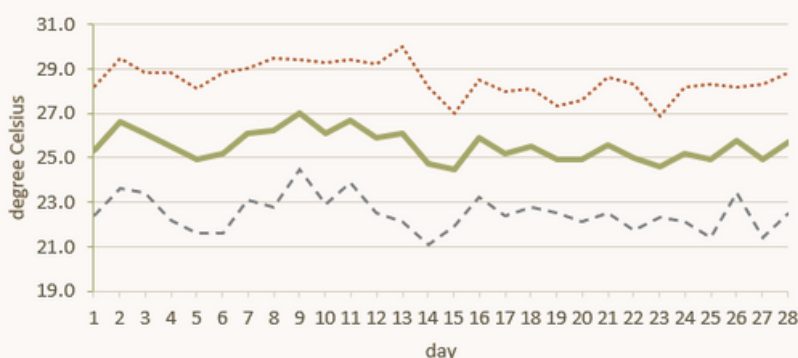
Temperature

Canefield: February 2025 Temperatures



Daily Average: 25.9°C/ 79°F
Mean Maximum: 29.6°C/ 86°F
Mean Minimum: 22.2°C/ 72°F
Actual Maximum: 31.0°C/ 88°F (26th)
Actual Minimum: 20.9°C/ 70°F (17th)

Douglas-Charles: February 2025 Temperatures



Daily Average: 25.5°C/ 79°F
Mean Maximum: 28.5°C/ 84°F
Mean Minimum: 22.5°C/ 73°F
Actual Maximum: 30.0°C/ 86°F (13th)
Actual Minimum: 21.1°C/ 70°F (14th)

--- MAX --- MIN — DAILY AVG

Average	Canefield Airport	Douglas-Charles Airport
Relative Humidity	77%	80%
Cloud Cover	5 oktas	6 oktas
Sea-Level Pressure	1014.8mbs/ 29.97inHg	1016.8mbs/ 30.03inHg
Wind	110° (ESE) @ 4kts/ 7kmh Max gust: 34kts/ 63kmh (14th)	110° (ESE) @ 9kts/ 17kmh Max gust: 34kts/ 63kmh (14th)
Sunshine hours -Mean daily duration -Highest daily -Percentage received	NA	6 hours 06 mins 10 hours 00mins (21st) 52% of total insolation

Climatology For February

Climatological Normal 30-year average (1991-2020)		Canefield Airport	Douglas-Charles Airport
Rainfall	Normal: Max: Min:	67.3mm/ 2.65in 231.9mm/ 9.13in (2018) 29.9mm / 1.18in (2021)	85.1mm/ 3.35in 196.6mm / 7.74in (1989) 4.2mm / 0.17in (2010)
Mean Temperature	Normal:	25.7°C/ 79°F	25.3°C/ 77°F
Maximum Temperature	Normal: Records: -mean max: -actual max:	29.7°C/ 86°F 31.9°C/ 90°F (2024) 34.0°C / 93°F (2024)	28.5°C / 84°F 29.8°C / 86°F (2010) 31.9°C / 90°F (1998)
Minimum Temperature	Normal: Records: -mean min: -actual min:	21.7°C/ 72°F 20.9°C/ 70°F (1990,2009) 18.0°C/ 64°F (2008)	22.1°C / 72°F 20.4°C / 68°F (1986) 17.0°C / 63°F (1988)
Sunshine	Normal	NA	7 hours 30mins

REMARKS:

Canefield: Rainfall total was about 2.5 times the normal. Mean temperature was normal, with slightly warmer than usual night-time temperatures.

Douglas-Charles: Rainfall total was twice the normal. Mean temperature was normal, with slightly warmer than usual night-time temperatures.

Troughs were dominant and contributed to most high rainfall events. A few, slightly hazy days were reported. Gusty winds were frequent.

Contact Us



2664618 /4665/4490/58



dmsclimate@dominica.gov.dm



www.weather.gov.dm