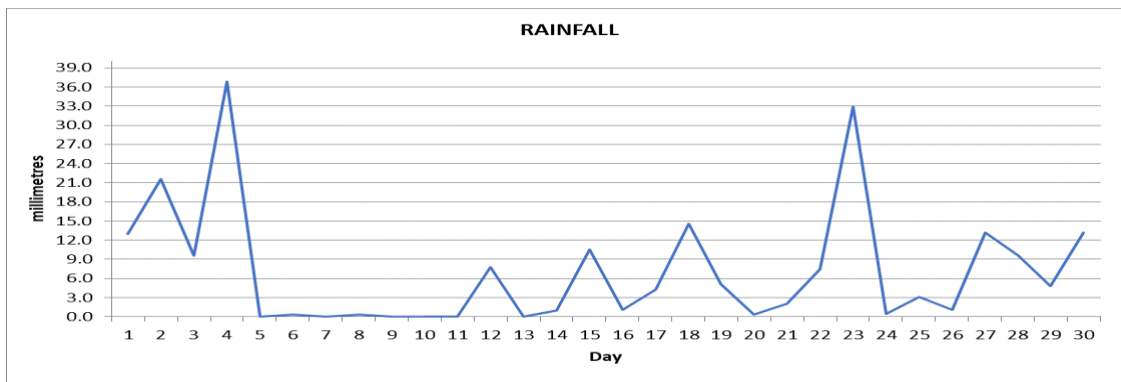
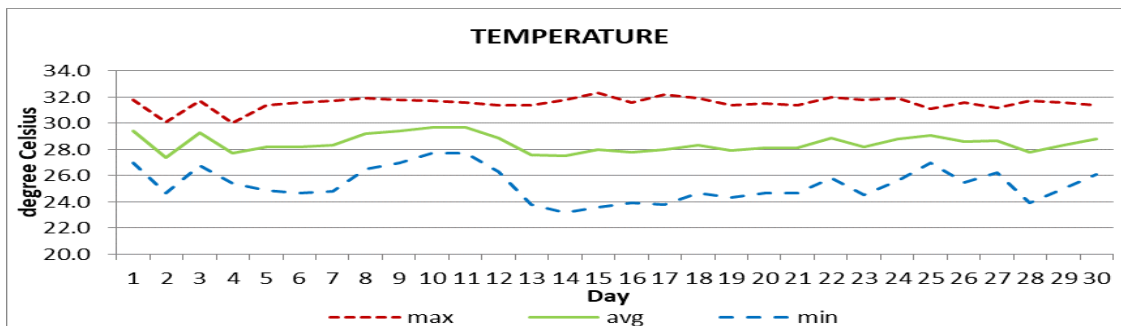


MONTHLY CLIMATE SUMMARY
DOUGLAS - CHARLES AIRPORT

June 2024



Total	214.1mm / 8.43in
Normal	191.0mm / 7.52in
Daily average	7.14mm / 0.28in



Average	28.5°C / 84°F
Normal	27.7°C / 82°F

OTHER

Parameter	Month	Date	Normal	Monthly Historical
Relative humidity	83%			
Cloud cover	6 oktas			
Rainfall				
Rainfall total	214.1mm / 8.43in			Max: 424.3mm / 16.70in (1987) Min: 43.1mm / 1.70in (1989)
Cumulative yearly total	910.8mm / 35.86in			
Maximum	36.9mm / 1.45in	4 th		
Number of rainfall days(≥1mm)	20			
Temperature				
Actual Maximum	32.3°C / 90°F	15 th		33.7°C / 93°F (1985)
Actual Minimum	23.2°C / 73°F	14 th		20.4°C / 70°F (2019)
Mean Maximum	31.6°C / 90°F		30.4°C / 86°F	32.0°C / 90°F (2011)
Mean Minimum	25.3°C / 77°F		25.0°C / 77°F	23.8°C / 73°F (1992)
Sunshine hours				
Average daily duration	8hrs 54mins		7hrs 30mins	
Highest daily	11hrs 42mins	12 th		
Percentage received	68%			
Wind				
Direction	120° (east south-east)			
Speed	08kts / 09mph / 15km/h			
Maximum gust	31kts / 36mph / 57km/h	20 th , 29 th		
Sea-level pressure	1015.6mbs / 29.99inHg		1013mbs	

REMARKS: Climatological normal -30-year average (1991-2020)

Total rainfall was normal for the month. Temperatures were warmer than usual. Dust haze and gusty winds were observed throughout the month, while 5 thunderstorm days were recorded. Tropical waves, unstable conditions, high pressure systems, and Hurricane Beryl affected the island during the month. Hurricane Beryl is the first hurricane for the Atlantic Hurricane season. Tropical storm watch issued for the island on June 29th at 2PM. Hurricane Beryl set record for earliest category 4 in the Atlantic Ocean and only category 4 in the month of June.