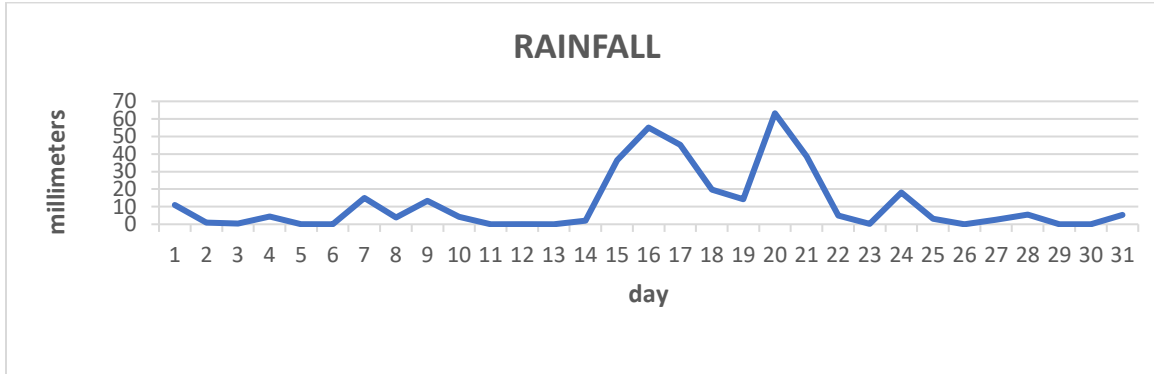


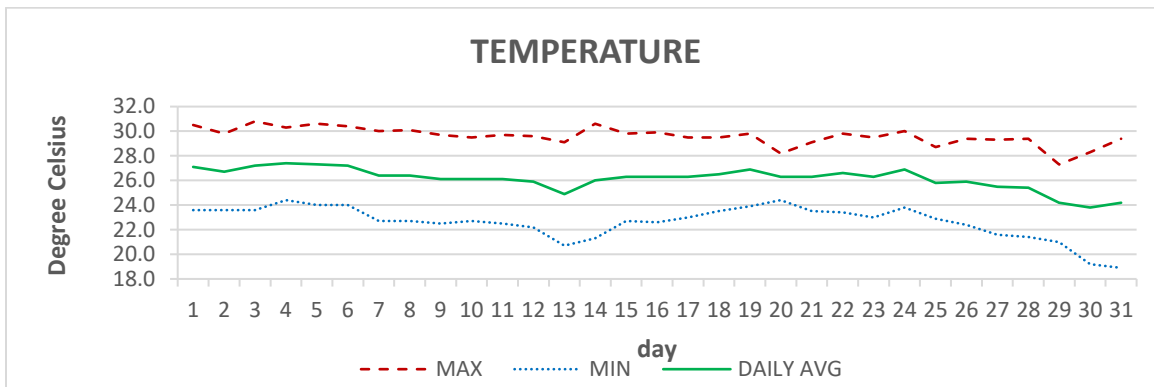
## MONTHLY CLIMATE SUMMARY

### DOUGLAS-CHARLES AIRPORT

December 2024



Total	367.7mm / 14.48in
Normal	219.2mm / 8.63in
Daily average	11.86mm / 0.47in



Average	26.1°C / 79°F
Normal	25.8°C / 79°F

#### OTHER

Parameter	Month	Date	Normal	Monthly Historical
<b>Relative Humidity</b>	83%			
<b>Cloud Cover</b>	5 oktas			
<b>Rainfall</b>				Max: 631.4mm / 24.86in (2001)
Rainfall Total	367.7mm / 14.48in			Min: 48.7mm / 1.92in (2022)
Cumulative yearly total	2721.5mm / 107.15in			
Maximum	63.2mm / 2.49in	20 <sup>th</sup>		
Number of rainfall days (≥1mm)	21			
<b>Temperature</b>				
Actual Maximum	30.8°C / 88°F	3 <sup>rd</sup>		31.1°C / 88°F (1987)
Actual Minimum	18.9°C / 66°F	31 <sup>st</sup>		16.9°C / 63°F (1991)
Mean Maximum	29.6°C / 86°F		28.9°C / 84°F	29.8°C / 86°F (1997, 2003)
Mean Minimum	22.6°C / 73°F		22.7°C / 73°F	20.6°C / 70°F (1992)
<b>Sunshine Hours</b>				
Average daily duration	7hrs 12mins		6hrs 30mins	
Highest daily	9hrs 42mins	5 <sup>th</sup>		
Percentage received	64%			
<b>Wind</b>				
Direction	120° (East south-east)			
Speed	6kts / 11km/h			
Maximum Gust	30kts / 56km/h	6 <sup>th</sup>		
<b>Sea-Level Pressure</b>	1014.9mbs / 29.97inHg		1013mbs	

**REMARKS: climatological normal rainfall and temperature- 30-year average (1991-2020)**

Rainfall total was significantly above normal. High pressure systems were the dominant weather pattern during the month. Dust haze was minimal with a significant event on the 24<sup>th</sup>. One thunderstorm day was recorded. Daylight maximum was above normal while, night-time minimum and daily mean were near normal. A funnel cloud was observed in the vicinity on the 28<sup>th</sup>. Flood warning was issued on 21<sup>st</sup>, where, significant flooding was reported across the island.