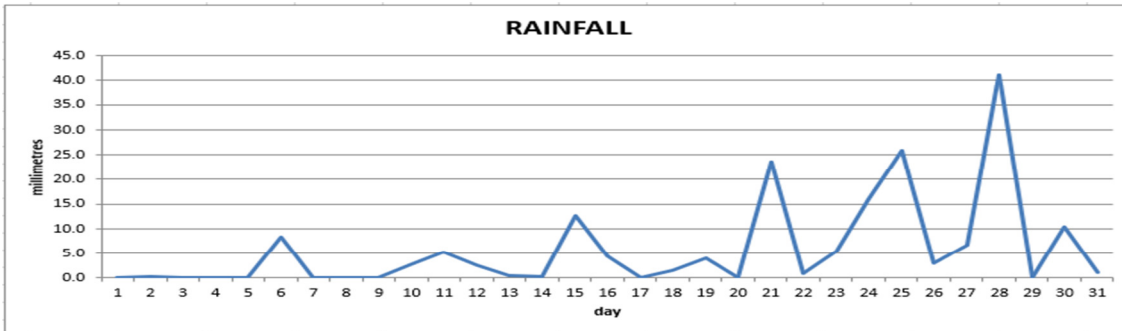
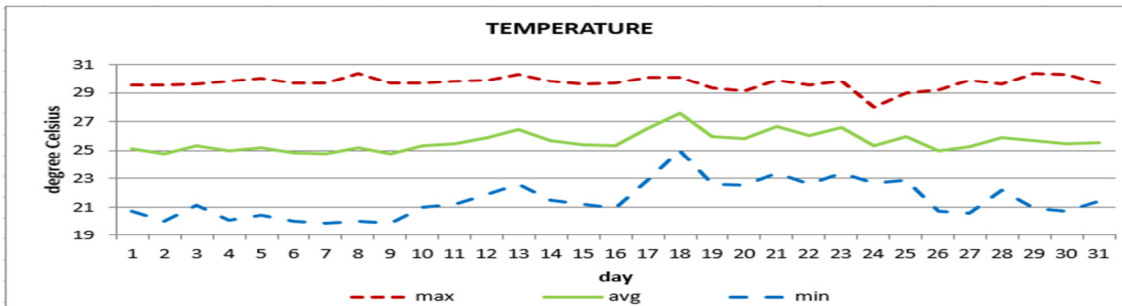


**DOUGLAS - CHARLES AIRPORT**  
**December 2020**



Total	176.9mm / 6.96in
Normal	219.2mm / 8.63in
Daily average	5.7mm / 0.22in



Average	25.6°C / 79°F
Normal	25.8°C / 79°F

**OTHER**

Parameter	Month	Date	Normal	Monthly Historical
<b>Relative Humidity</b>	82%			
<b>Cloud Cover</b>	5 oktas			
<b>Rainfall</b>				
Rainfall Total	176.9mm / 6.96in			
Cumulative yearly total	2795.7mm / 110.07in			Max: 631.4mm / 24.86in (2001)
Maximum	41.2mm / 1.62in	28 <sup>th</sup>		Min: 91.2mm / 3.59in (2009)
Number of rainfall days (≥1mm)	18			
<b>Temperature</b>				
Actual Maximum	30.4°C / 86°F	8 <sup>th</sup> , 29 <sup>th</sup>		31.1°C / 88°F (1987)
Actual Minimum	19.9°C / 68°F	7 <sup>th</sup> , 9 <sup>th</sup>		16.9°C / 63°F (1991)
Mean Maximum	29.7°C / 86°F		28.9°C / 84°F	29.8°C / 86°F (1997, 2003)
Mean Minimum	21.5°C / 72°F		22.7°C / 73°F	20.6°C / 70°F (1992)
<b>Sunshine Hours</b>				
Average daily duration	7hrs 54mins		6hrs 30mins	
Highest daily	09hrs 48mins	9 <sup>th</sup>		
Percentage received	70%			
<b>Wind</b>				
Direction	110° (East south east)			
Speed	6kts / 11km/h			
Maximum Gust	39kts / 72km/h	24 <sup>th</sup>		
<b>Sea-Level Pressure</b>	1014.9mbs / 29.97inHg		1013mbs	

REMARKS: climatological normal rainfall- 30-year average (1982-2011) and average temperature revised - 21-year average (1990-2010)

Rainfall was normal. Daytime temperature was slightly warmer than usual while night-time temperature was cooler than usual. Trough systems and the Atlantic high-pressure system were the dominant features. Hazy and breezy conditions were observed.