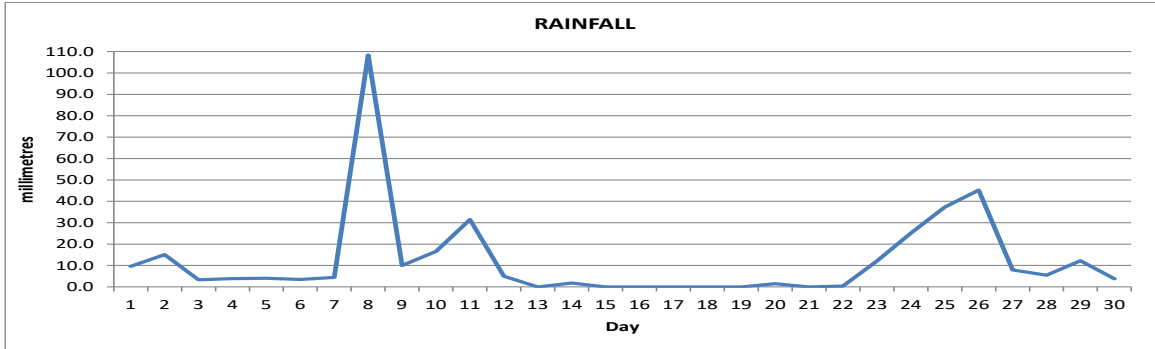
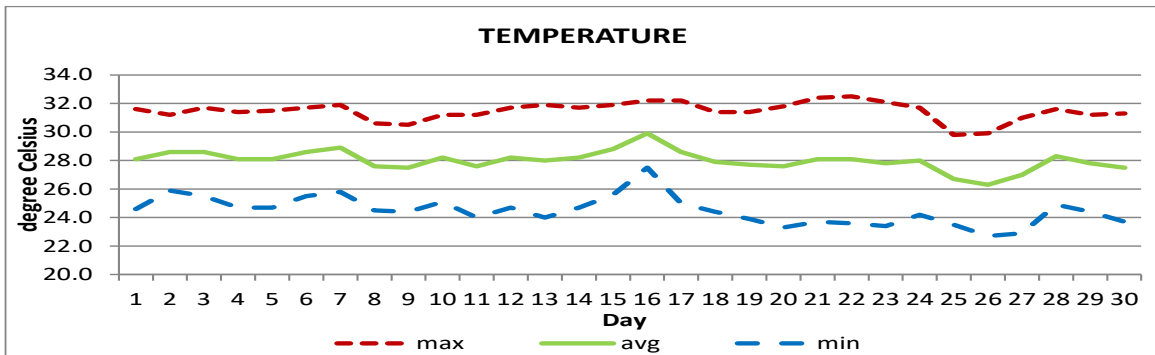


**MONTHLY CLIMATE SUMMARY  
DOUGLAS - CHARLES AIRPORT  
September 2024**



Total	368.1mm/ 14.5in
Normal	319.1mm/ 12.56in
Daily average	12.3 mm / 0.48in



Average	28.0°C/ 82°F
Normal	27.6°C/ 82°F

**OTHER**

Parameter	Month	Date	Normal	Monthly Historical
<b>Relative humidity</b>	88%			
<b>Cloud cover</b>	6 oktas			
<b>Rainfall</b>				
Rainfall Total	368.1mm / 14.5in			Max: 917.0mm / 36.10in (2022) Min: 94.3mm / 3.71in (2012)
Cumulative yearly total	1,822.9 mm / 71.77in			
Maximum	108.4mm / 4.27in	8 <sup>th</sup>		
Number of rainfall days (≥1mm)	22			
<b>Temperature</b>				
Actual Maximum	32.5°C / 91°F	22 <sup>nd</sup>		34.3°C / 93°F (2012)
Actual Minimum	22.7°C / 73°F	26 <sup>th</sup>		20.0°C / 68°F (1992)
Mean Maximum	31.5°C / 90°F		31.0°C / 88°F	32.2°C / 90°F (2006,2023)
Mean Minimum	24.5°C / 77°F		24.1°C / 75°F	22.5°C / 73°F (1992)
<b>Sunshine hours</b>				
Average daily duration	7hrs 18mins		7hrs 05mins	
Highest daily	10hrs 48mins	13 <sup>th</sup> , 30 <sup>th</sup>		
Percentage received	59%			
<b>Wind</b>				
Direction	120° (East south east)			
Speed	05kts / 09km/h			
Maximum gust	26kts / 48km/h	24 <sup>th</sup>		
<b>Sea-level pressure</b>	1013.2mbs / 29.92inHg		1013mbs	

**REMARKS:** Climatological normal -30-year average (1991-2020)

Total rainfall was above normal. The mean maximum temperature was normal with mean minimum and mean daily temperatures above normal. Unstable conditions, tropical waves, high-pressure system and localised effects affected the island. Winds were generally light with occasional gusts. Thunderstorms were recorded on 10 days.

