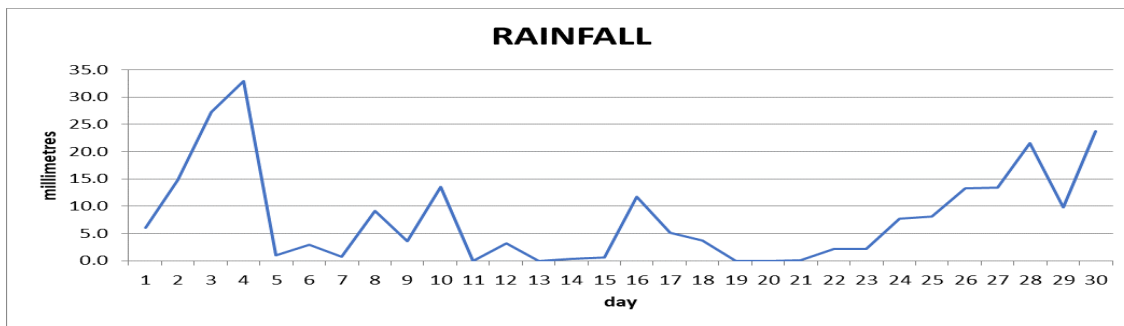
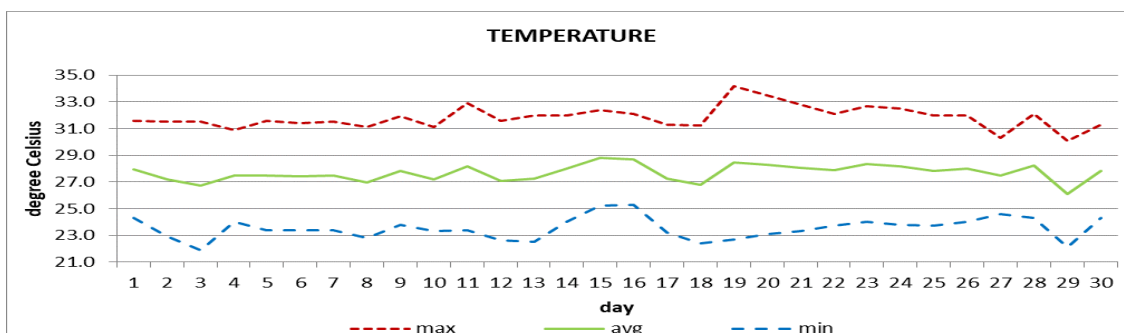


**DOUGLAS - CHARLES AIRPORT**

September 2020



Total	239.1mm / 9.41in
Normal	319.1mm / 12.56in
Daily average	8.0mm / 0.31in



Average	27.7°C / 82°F
Normal	27.6°C / 82°F

**OTHER**

Parameter	Month	Date	Normal	Monthly Historical
<b>Relative Humidity</b>	83%			
<b>Cloud Cover</b>	5 oktas			
<b>Rainfall</b>				
Rainfall Total	239.1mm / 9.41in			Max: 744.5mm / 29.31in (2004)
Cumulative yearly total	1310.2mm / 51.58in			Min: 94.3mm / 3.71in (2012)
Maximum	33.0mm / 1.30in	4 <sup>th</sup>		
Number of rainfall days (≥1mm)	22			
<b>Temperature</b>				
Actual Maximum	34.2°C / 93°F	19 <sup>th</sup>		34.3°C / 93°F (2012)
Actual Minimum	21.9°C / 72°F	3 <sup>rd</sup>		20.0°C / 68°F (1992)
Mean Maximum	31.8°C / 90°F		31.0°C / 88°F	32.2°C / 90°F (2006)
Mean Minimum	23.5°C / 75°F		24.1°C / 75°F	22.5°C / 73°F (1992)
<b>Sunshine Hours</b>				
Average daily duration	8hrs 12mins		7hrs 05mins	
Highest daily	10hrs 48mins	14 <sup>th</sup>		
Percentage received	67%			
<b>Wind</b>				
Direction	150° (South south east)			
Speed	5kts / 09km/h			
Maximum Gust	54kts / 100km/h	30 <sup>th</sup>		
<b>Sea-Level Pressure</b>	1013.4mbs / 29.93inHg		1013mbs	

REMARKS: climatological normal rainfall- 30-year average (1982-2011) and average temperature revised - 21-year average (1990-2010)

The rainfall total was slightly less than it's usual. Cooler than usual nights with warmer than usual daytime highs were recorded. Trough systems and the Atlantic high-pressure system were the dominant features. Thunderstorms were recorded on 8 days. Flooding in Portsmouth (8<sup>th</sup>) and Roseau (28<sup>th</sup>).