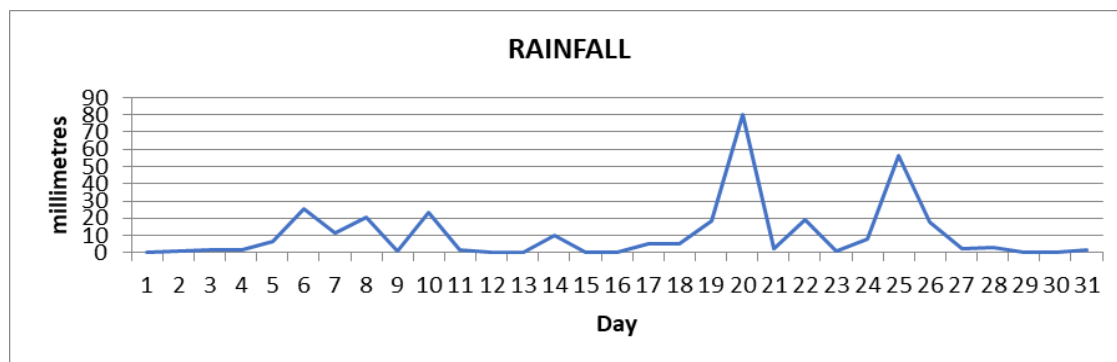
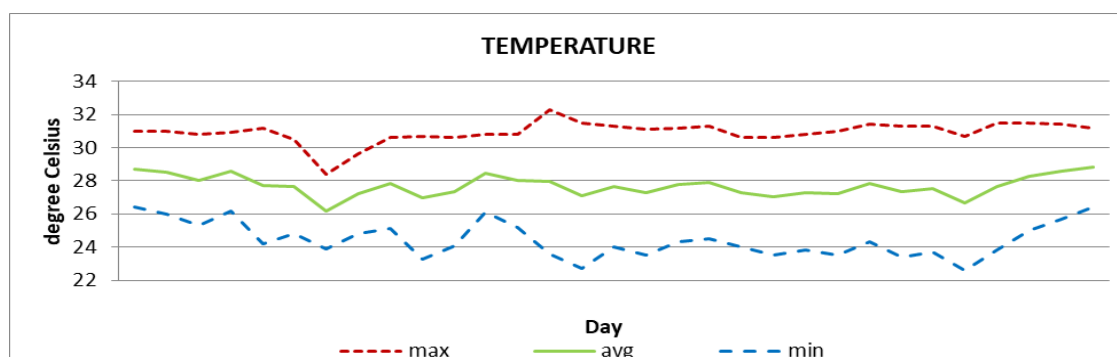


## MONTHLY CLIMATE SUMMARY DOUGLAS - CHARLES AIRPORT August 2022



Total	322.3mm/ 12.7in
Normal	267.9mm/ 10.55in
Daily average	10.4mm /0.41in



Average	27.7°C/ 82°F
Normal	27.8°C/ 82°F

### OTHER

Parameter	Month	Date	Normal	Monthly Historical
<b>Relative humidity</b>	84%			
<b>Cloud cover</b>	6 oktas			
<b>Rainfall</b>				
Rainfall total	322.3mm/ 12.7in			Max: 457.3mm / 18.00in (2010) Min: 80.1mm / 3.15in (1984)
Cumulative yearly total	1364.4mm/ 53.72in			
Maximum	80.1mm/ 3.15in	20 <sup>th</sup>		
Number of rainfall days(≥1mm)	21			
<b>Temperature</b>				
Actual maximum	32.3°C / 90°F	14 <sup>th</sup>		34.3°C/ 93°F (1996)
Actual minimum	22.6°C / 73°F	27 <sup>th</sup>		20.9°C/ 70°F (1992)
Mean maximum	30.9°C / 88°F		31.0°C/ 88°F	31.8°C / 90°F (2006,2010)
Mean minimum	24.4°C / 75°F		24.7°C/ 77°F	23.0°C / 73°F (1992)
<b>Sunshine hours</b>				
Average daily duration	07hrs 48mins		8hrs 48mins	
Highest daily	10hrs 54mins	23 <sup>rd</sup>		
Percentage received	62%			
<b>Wind</b>				
Direction	120° (east south east)			
Speed	07kts / 08mph / 13km/h			
Maximum gust	31kts / 36mph / 57km/h	07 <sup>th</sup>		
<b>Sea-level pressure</b>	1015.1mbs / 29.98inHg		1013mbs	

**REMARKS:** Climatological normal -30-year average (1991-2020)

The rainfall total was above normal. Peak daytime temperatures and the daily mean were as usual, while night-time temperatures were cooler than usual. Tropical waves and troughs were active this month resulting in localized floods. Gusty winds and dust haze were recorded. Thunderstorms were recorded on 4 days.