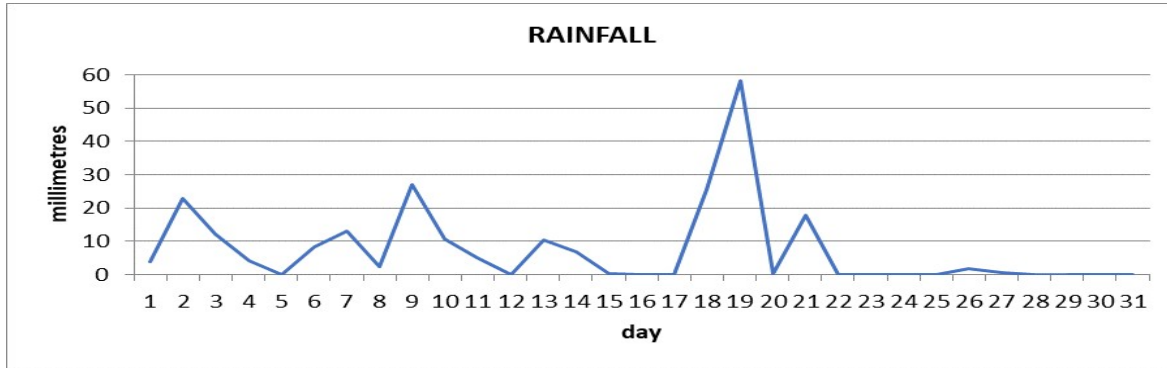
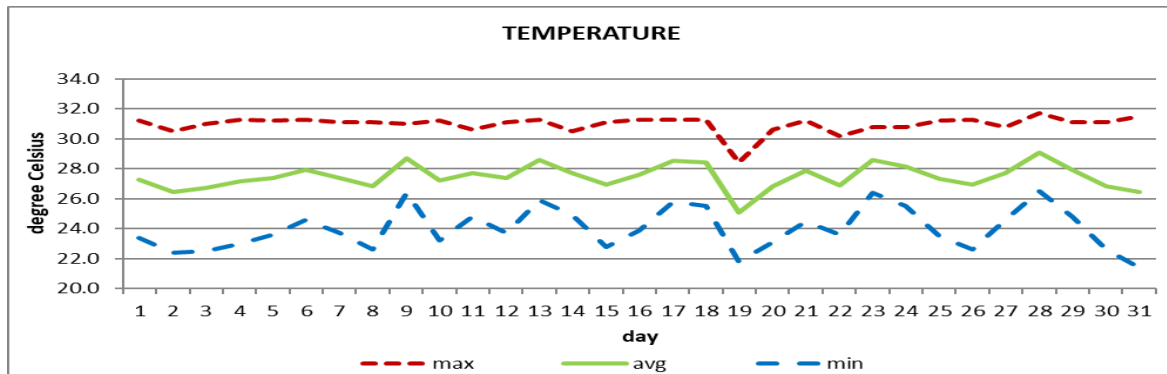


**MONTHLY CLIMATE SUMMARY
DOUGLAS - CHARLES AIRPORT**
August 2021


Total	230.5mm/ 9.1in
Normal	267.9mm/ 10.55in
Daily average	7.4mm /0.29in



Average	27.5°C/82°F
Normal	27.8°C/ 82°F

OTHER

Parameter	Month	Date	Normal	Monthly Historical
Relative humidity	82%			
Cloud cover	5 oktas			
Rainfall				
Rainfall total	230.5mm/ 9.1in			Max: 457.3mm / 18.00in (2010) Min: 80.1mm / 3.15in (1984)
Cumulative yearly total	1266.3mm/ 49.85in			
Maximum	58.1mm/ 2.29in	19 th		
Number of rainfall days(≥1mm)	16			
Temperature				
Actual maximum	31.7°C / 90°F	28 th		34.3°C/ 93°F (1996)
Actual minimum	21.4°C / 70°F	31 st		20.9°C/ 70°F (1992)
Mean maximum	31.0°C / 88°F		31.0°C/ 88°F	31.8°C / 90°F (2006,2010)
Mean minimum	24.0°C / 75°F		24.7°C/ 77°F	23.0°C / 73°F (1992)
Sunshine hours				
Average daily duration	07hrs 48mins		8hrs 48mins	
Highest daily	11hrs 30mins	03 rd		
Percentage received	62%			
Wind				
Direction	120° (east south east)			
Speed	07kts / 08mph / 13km/h			
Maximum gust	32kts / 20mph / 59km/h	19 th		
Sea-level pressure	1015.5mbs / 29.99inHg		1013mbs	

REMARKS: Climatological normal -30-year average (1991-2020)

The rainfall total was normal. Peak daytime temperatures were as usual. The daily mean and night-time temperatures were cooler than usual. The Atlantic high-pressure system was the dominant feature. Gusty winds and dust haze were recorded. Thunderstorms were recorded on 2 days.