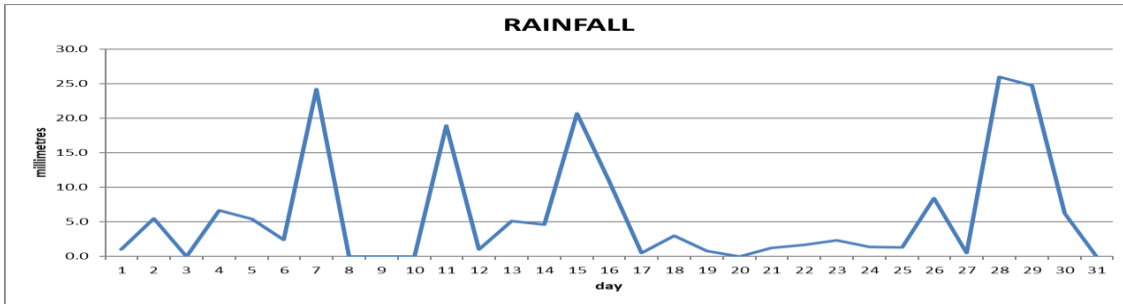
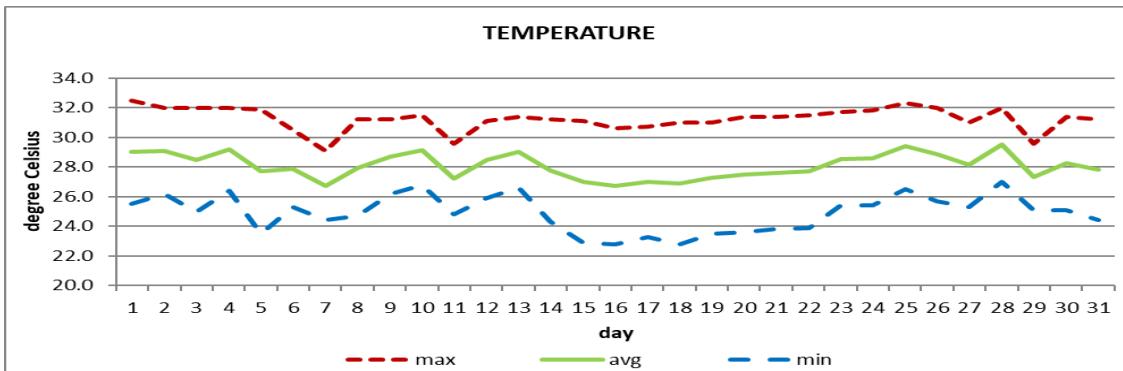


**DOUGLAS - CHARLES AIRPORT**

**JULY 2020**



Total	184.5mm/ 7.26in
Normal	237.2mm/ 9.34in
Daily average	6.0mm / 0.24in



Average	28.1°C/ 82°F
Normal	27.8°C/ 82°F

**OTHER**

Parameter	Month	Date	Normal	Monthly Historical
<b>Relative humidity</b>	80%			
<b>Cloud cover</b>	6 oktas			
<b>Rainfall</b>				
Rainfall total	184.5mm/ 7.26in			Max: 424.3mm / 16.70in (1987) Min: 43.1mm / 1.70in (1989)
Cumulative yearly total	801.4mm/ 31.55in			
Maximum	26.0mm/ 1.02in	28 <sup>th</sup>		
Number of rainfall days(≥1mm)	22			
<b>Temperature</b>				
Actual Maximum	32.5°C / 91°F	01 <sup>st</sup>		33.2°C / 91°F (1995)
Actual Minimum	22.8°C / 73°F	16 <sup>th</sup> , 18 <sup>th</sup>		20.7°C / 70°F (1989/1993)
Mean Maximum	31.3°C / 88°F		30.5°C / 88°F	31.4°C/ 88°F (2010, 2017)
Mean Minimum	24.9°C / 77°F		25.0°C / 77°F	23.9°C/ 75°F (1992, 2019)
<b>Sunshine hours</b>				
Average daily duration	8hrs 00mins		7hrs 36mins	
Highest daily	11hrs 42mins	23 <sup>rd</sup>		
Percentage received	62%			
<b>Wind</b>				
Direction	110° (east south east)			
Speed	08kts / 15km/h			
Maximum gust	30kts / 56km/h	31 <sup>st</sup>		
<b>Sea-level pressure</b>	1015.1mbs / 29.98inHg		1013mbs	

**REMARKS:** climatological normal rainfall- 30-year average (1981-2010) and average temperature revised - 21-year average (1990-2010)

Below normal rainfall with warmer than to usual temperatures were recorded for the month. Trough systems, tropical waves and the Atlantic high-pressure system were the dominant features. Potential Tropical Storm #9 center passed over the south of Dominica on the 29<sup>th</sup>. Gusty winds and dust haze were also observed throughout the month. Thunderstorms were recorded on 2 days.