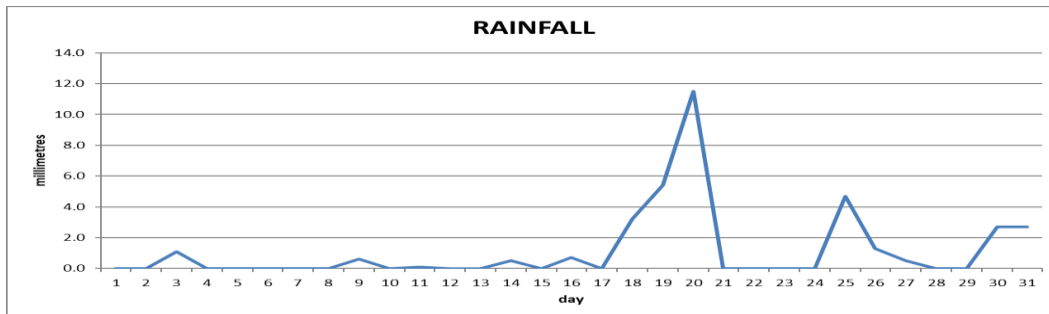
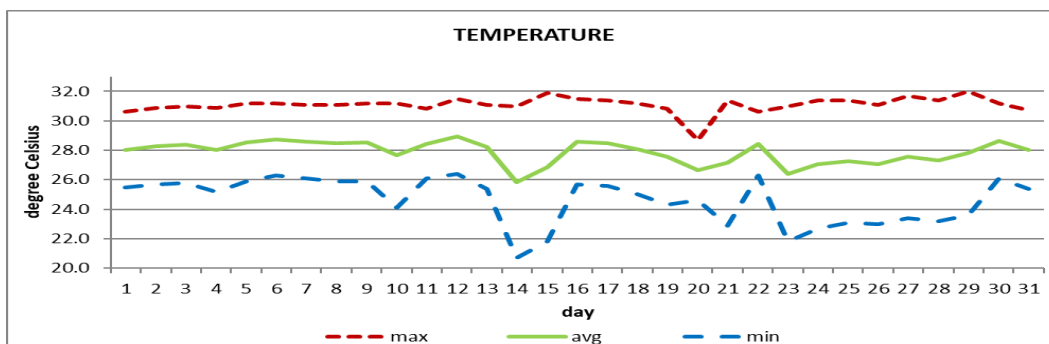


**DOUGLAS - CHARLES AIRPORT**

May 2020



Total	35.0mm / 1.4in
Normal	244.5mm / 9.63in
Daily average	1.1mm / 0.04in



Average	27.9°C / 82°F
Normal	27.1°C / 81°F

**OTHER**

Parameter	Month	Date	Normal	Monthly Historical
Relative humidity	74%			
Cloud cover	5 oktas			
<b>Rainfall</b>				Max: 815.7mm / 32.11in (1987) Min: 12.1mm / 0.49in (2001)
Rainfall total	35.0mm / 1.4in			
Cumulative yearly total	510.4mm / 20.09in			
Maximum	11.5mm / 0.45in	20 <sup>th</sup>		
Number of rainfall days(≥1mm)	8			
<b>Temperature</b>				
Actual maximum	32.0°C / 90°F	29 <sup>th</sup>		33.0°C / 91°F (2010)
Actual minimum	20.7°C / 70°F	14 <sup>th</sup>		19.8°C / 68°F (1984/86)
Mean maximum	31.1°C / 88°F		30.1°C / 86°F	31.3°C / 88°F (2005)
Mean minimum	24.6°C / 77°F		24.0°C / 75°F	23.0°C / 73°F (2019)
<b>Sunshine hours</b>				
Average daily duration	9hrs 12mins		8hrs	
Highest daily	11hrs 48mins	14 <sup>th</sup>		
Percentage received	72%			
<b>Wind</b>				
Direction	120° (east south east)			
Speed	09kts / 17km/h			
Maximum gust	26kts / 48km/h	10 <sup>th</sup> 16 <sup>th</sup>		
<b>Sea-level pressure</b>	1016.8mbs / 30.03inHg		1013mbs	

REMARKS: climatological normal rainfall- 30-year average (1982-2011) and average temperature revised - 21-year average (1990-2010)

Drier and warmer than usual conditions recorded for May. Second driest May on record (driest:2001). One of the warmest May on record (2001,2005). The Atlantic high-pressure system was the dominant feature throughout the month. Haze and gusty winds were recorded throughout the month.