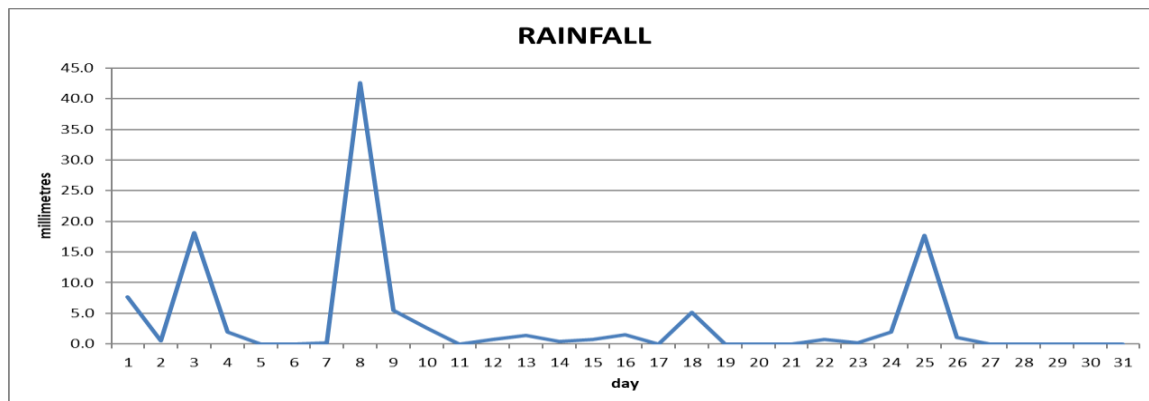
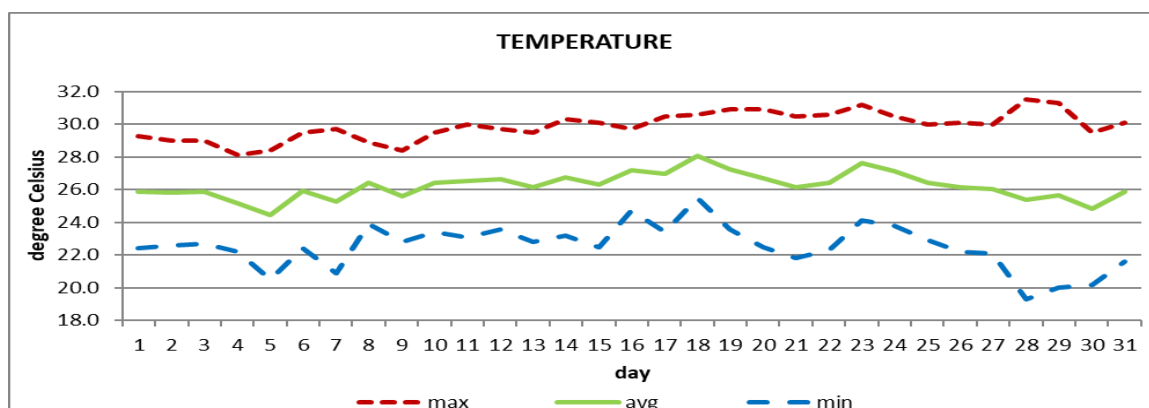


## DOUGLAS-CHARLES AIRPORT

### March 2024



Total	110.9mm / 4.37in
Normal	110.5mm / 4.35in
Daily average	3.6mm / 0.14in



Average	26.2°C / 79°F
Normal	25.5°C / 79°F

### OTHER

Parameter	Month	Date	Normal	Monthly Historical
<b>Relative humidity</b>	79%			
<b>Cloud cover</b>	5 oktas			
<b>Rainfall</b>				
Rainfall total	110.9mm / 4.37in			Max: 317.4mm / 12.50in (1995) Min: 27.7mm / 1.09in (1994)
Cumulative yearly total	383.6mm / 15.10in	.		
Maximum	42.6mm / 1.68in	8 <sup>th</sup>		
Number of rainfall days(≥1mm)	12			
<b>Temperature</b>				
Actual maximum	31.5°C / 90°F	28 <sup>th</sup>		32.3°C / 90°F (2010)
Actual minimum	19.3°C / 66°F	28 <sup>th</sup>		17.2°C / 63°F (2000)
Mean maximum	29.9°C / 86°F		28.8°C / 84°F	30.8°C / 88°F (2010)
Mean minimum	22.5°C / 73°F		22.3°C / 72°F	21.0°C / 70°F (1987)
<b>Sunshine hours</b>				
Average daily duration	8hrs 24mins		7hrs 36mins	
Highest daily	10hrs 54mins	28 <sup>th</sup> 29 <sup>th</sup>		
Percentage received	70%			
<b>Wind</b>				
Direction	130° (south east)			
Speed	7kts / 13km/h			
Maximum gust	27kts / 50km/h	16 <sup>th</sup>		
<b>Sea-level pressure</b>	1015.6mbs / 29.99inHg		1013mbs	

REMARKS: Climatological normal -30-year average (1991-2020)

The rainfall total was normal. Warmer than usual temperatures were recorded. The Atlantic high-pressure system was the dominant feature. There was 1 thunderstorm day and hazy conditions mid-month.