



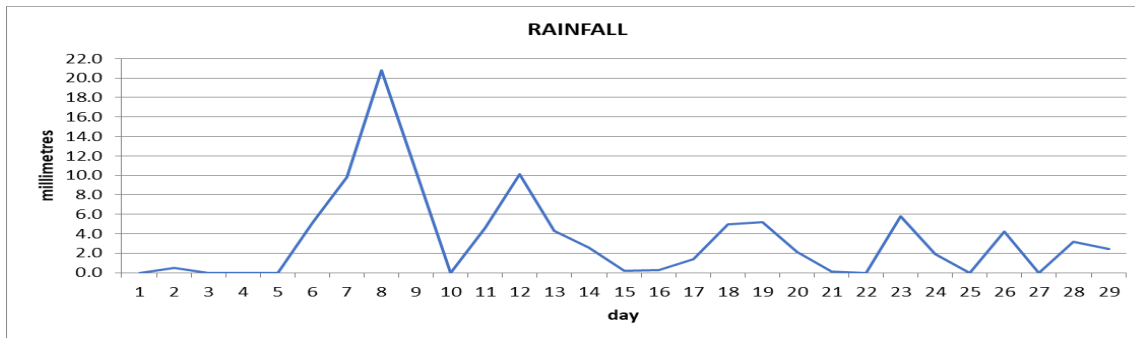
Tel: (767) 449 1752/ 445 7849

Email: [www.metoffice@cwdom.dm](mailto:www.metoffice@cwdom.dm)

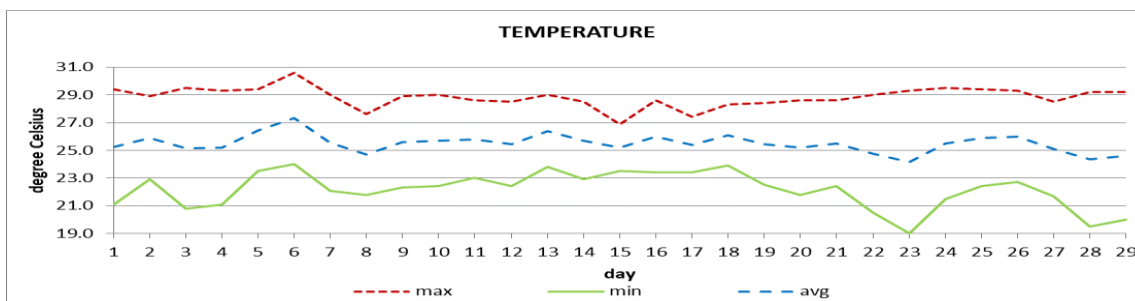
Website: [www.weather.gov.dm](http://www.weather.gov.dm)

**DOUGLAS - CHARLES AIRPORT**

**February 2020**



Total	100.0mm / 3.94in
Normal	97.5mm / 3.84 in
Daily average	3.4mm / 0.13in



Monthly mean	25.5°C / 79°F
21 Yr. Average	25.1°C / 77°F

**OTHER**

Parameter	Month	Date	Normal	Monthly Historical
<b>relative humidity</b>	78%			
<b>cloud cover</b>	5oktas			
<b>rainfall</b>				Max: 196.6mm / 7.74in (1989)
number of rainfall days (≥1mm)	17			Min: 4.2mm / 0.17in (2010)
cumulative yearly total	294.2mm / 11.58in			
maximum	20.8mm / 0.82in	08 <sup>th</sup>		
<b>Temperature</b>				
average maximum	28.8°C / 84°F		28.3°C / 82°F	30.0°C / 86°F (2012)
average minimum	22.1°C / 72°F		22.0°C / 72°F	20.4°C / 68°F (1986)
maximum	30.6°C / 88°F	06 <sup>th</sup>		31.9°C / 90°F (1998)
minimum	19.0°C / 66°F	23 <sup>rd</sup>		17.0°C / 63°F (1988)
<b>sunshine hours</b>				
average daily duration	7hrs		7hrs 30mins	
highest daily	10hrs 54mins	27 <sup>th</sup>		
percentage received	58%			
<b>wind</b>				
direction	120° (east south east)			
speed	08kts / 15km/h			
maximum gust	36kts / 67km/h	07 <sup>th</sup>		
<b>sea-level pressure</b>	1017.5mbs / 30.05inHg		1013mbs	

**REMARKS:** climatological standard normal rainfall- 30-year average (1981-2010) and average temperature revised - 21-year average (1990-2010)

The rainfall total was normal for the month, with warmer than to usual temperatures. The Atlantic high-pressure system and trough systems were the dominant features. Gusty winds were recorded throughout.