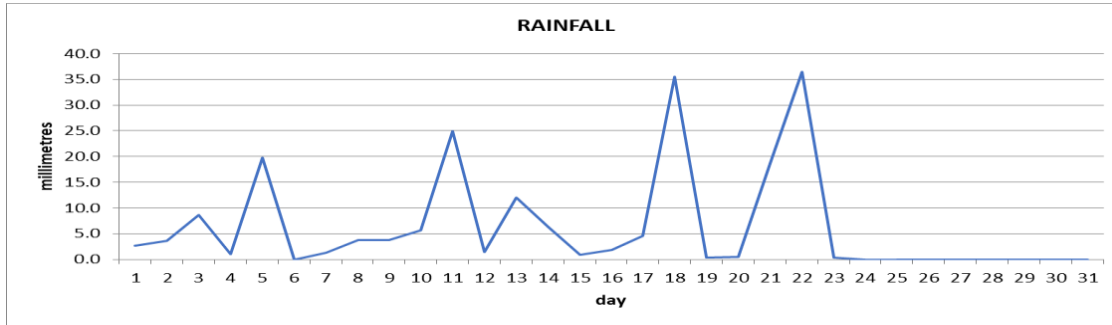
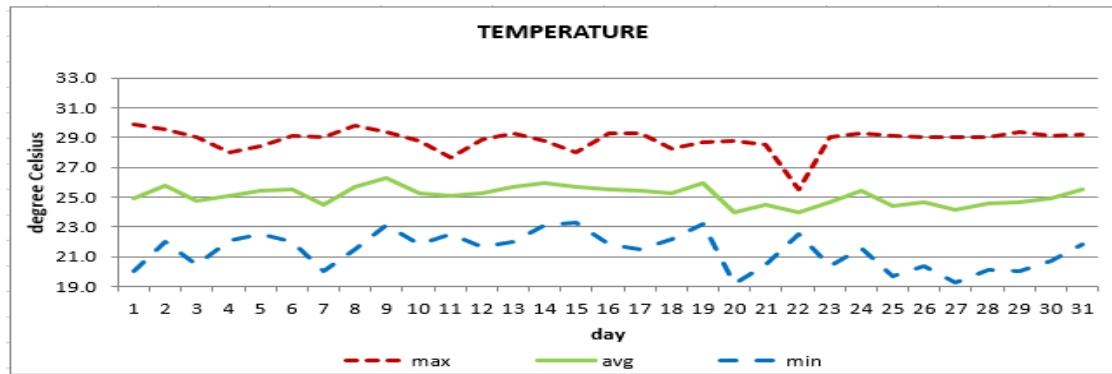


DOUGLAS - CHARLES AIRPORT

January 2020



Total	194.2mm / 7.65in
Normal	136.0mm / 5.35in
Daily average	6.3mm / 0.25in



Monthly mean	25.1°C / 77°F
21 Yr. Average	25.3°C / 77°F

OTHER

Parameter	Month	Date	Normal	Monthly Historical
Relative Humidity	80%			
Cloud Cover	5oktas			
Rainfall				
number of rainfall days (≥1mm)	18			Max: 249.0mm / 9.80in (1998)
cumulative yearly total	194.2mm / 7.65in			Min: 68.6mm / 2.70in (1989)
maximum	36.4mm / 1.43in	22 nd		
Temperature				
average maximum	28.8°C / 84°F		28.2°C / 82°F	29.4°C / 84°F (2012)
average minimum	21.4°C / 70°F		22.4°C / 72°F	20.7°C / 70°F (2019)
maximum	29.9°C / 86°F	1 st		31.8°C / 90°F (1987)
minimum	19.2°C / 66°F	20 th		17.1°C / 63°F (1988)
Sunshine Hours				
average daily duration	7hrs 12mins		6hrs 42mins	
highest daily	10hrs 00mins	19 th , 26 th , 31 st		
percentage received	63%			
Wind				
direction	120° (east south east)			
speed	07kts / 13km/h			
maximum gust	47kts / 87km/h	10 th , 11 th		
Sea-level pressure	1016.8mbs / 30.03inHg		1013mbs	

REMARKS: climatological standard normal rainfall- 30-year average (1981-2010) and average temperature revised - 21-year average (1990-2010)

The Atlantic High-Pressure System and trough systems were the dominant features. The rainfall total was above normal. Night-time temperatures were cooler than the usual, while day-time peak temperatures were warmer than the usual. High surf advisories and Small craft warnings were issued from the 09th to 15th and 18th to 21st of the month. Gusty winds and rough seas were recorded.