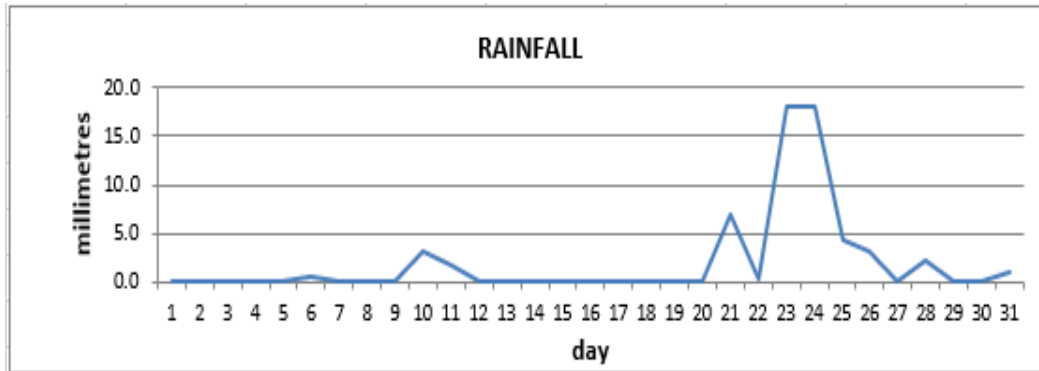
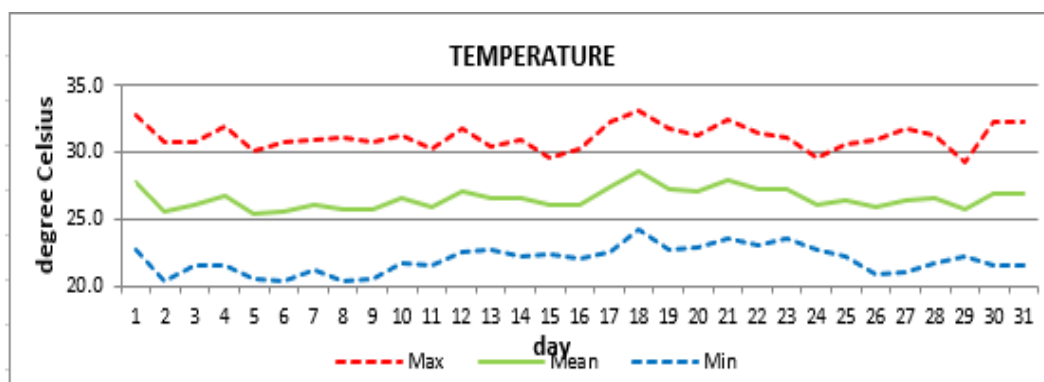


**CANEFIELD AIRPORT**

December 2020



Total	59.5mm/ 2.34in
Normal	108.3mm/ 4.26in
Daily average	1.9mm/ 0.07in



Average	26.6°C/ 81°F
Normal	26.2°C/ 79°F

**OTHER**

Parameter	Month	Date	Average	Monthly Historical
Relative humidity	74%			
Cloud cover	4 oktas			
<b>Rainfall</b>				
Rainfall total	59.5mm/ 5.4in			Max: 213.4mm / 8.40in (2011)
Cumulative yearly total	1540.3mm/ 60.64in			Min: 23.8mm / 0.94in (2010)
Maximum	18.0mm/ 0.71in	23 <sup>rd</sup> , 24 <sup>th</sup>		
Number of rainfall days(≥1mm)	9			
<b>Temperature</b>				
Actual maximum	33.1°C/ 91°F	18 <sup>th</sup>		33.1°C / 91°F (2020)
Actual minimum	20.4°C/ 68°F	2 <sup>nd</sup> , 6 <sup>th</sup> , 8 <sup>th</sup>		18.0°C / 64°F (1991)
Mean maximum	31.1°C / 88°F		30.2°C/ 86°F	31.5°C/ 90°F (1997)
Mean minimum	22.0°C / 72°F		22.3°C/ 72°F	21.3°C/ 68°F (2005)
<b>Wind</b>				
Direction	140° (south east)			
Speed	03kts/ 06m/h			
Maximum gust	25kts/ 46km/h	24 <sup>th</sup>		
<b>Sea-level pressure</b>	1013.0mbs/ 29.92inHg		1013mbs	

**REMARKS:** climatological normal rainfall- 30-year average (1982-2011) and average temperature revised - 21-year average (1990-2010)

Rainfall was below normal with warmer than usual daytime temperatures and normal night-time temperatures recorded. A series of trough systems and the Atlantic high-pressure system were the dominant features. Occasional breezy conditions observed.