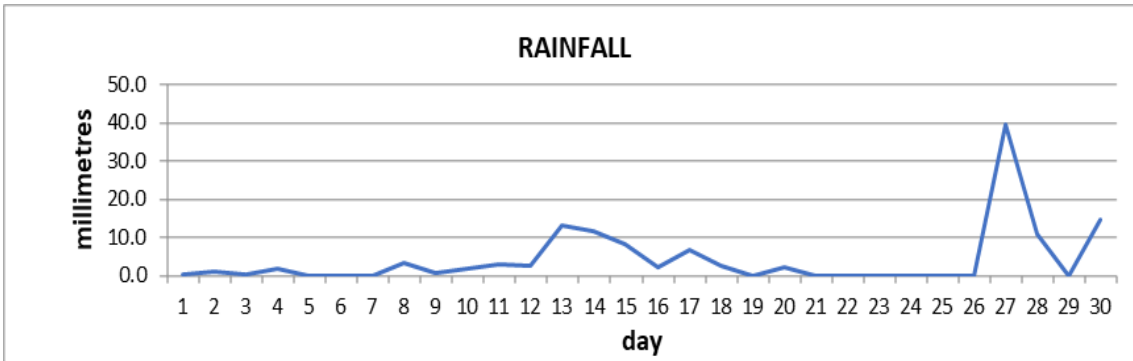
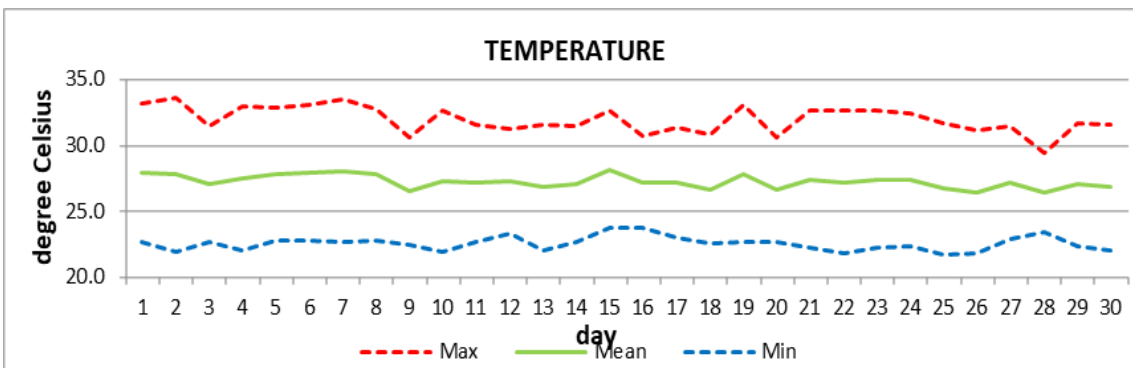


**MONTHLY CLIMATE SUMMARY
CANEFIELD AIRPORT
November 2021**



Total	125.2mm/ 4.93in
Normal	176.7mm/ 6.96in
Daily average	4.2mm/ 0.17in



Average	27.2°C/ 81°F
Normal	27.2°C/ 81°F

OTHER

Parameter	Month	Date	Average	Monthly Historical
Relative humidity	74%			
Cloud cover	5 oktas			
Rainfall				
Rainfall total	125.2mm / 4.93in			Max: 438.3mm / 17.26in (1984)
Cumulative yearly total	1302.3mm / 51.27in			Min: 28.4mm / 1.12in (2001)
Maximum	39.4mm / 1.55in	27 th		
Number of rainfall days(≥1mm)	15			
Temperature				
Actual maximum	33.6°C / 91°F	2 nd		33.8°C / 93°F (2013)
Actual minimum	21.7°C / 72°F	25 th		19.4°C / 66°F (2008)
Mean maximum	32.0°C / 90°F		31.2°C / 88°F	32.4°C / 90°F (1992)
Mean minimum	22.5°C / 73°F		23.2°C / 73°F	22.4°C / 72°F (2007)
Wind				
Direction	120° (east south east)			
Speed	03kts/ 06km/h			
Maximum gust	28kts/ 52km/h	15 th		
Sea-level pressure	1012.6mbs/ 29.90inHg		1013mbs	

REMARKS: climatological normal rainfall and temperature- 30-year average (1991-2020)

Both rainfall amount and mean temperature were normal for the month. However daytime maximum was warmer than usual while night-time lows were cooler than usual. High pressure systems were dominant for most of the month. Surface troughs affected the island during the last week which resulted in localized flooding on the 28th.