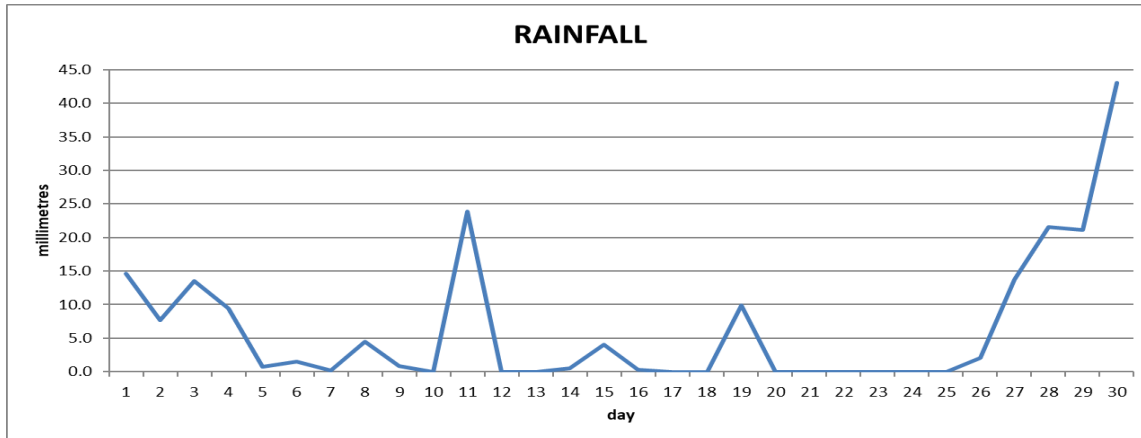
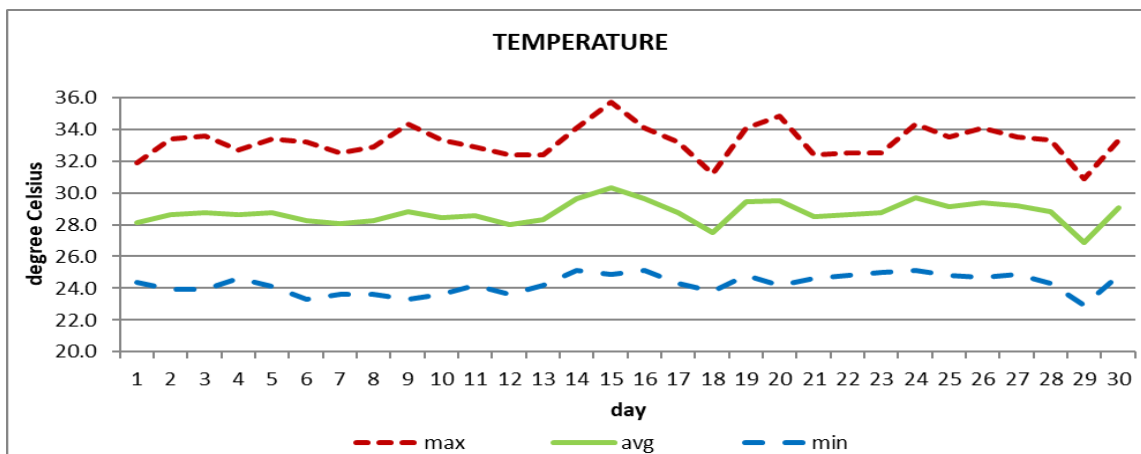


CANEFIELD AIRPORT
September 2020


| | |
|---------------|-----------------|
| Total | 193.2mm/ 7.6in |
| Normal | 253.7mm/ 9.99in |
| Daily average | 6.4mm/ 0.25in |



| | |
|---------|--------------|
| Average | 28.7°C/ 84°F |
| Normal | 27.9°C/ 82°F |

OTHER

| Parameter | Month | Date | Average | Monthly Historical |
|-------------------------------|-------------------------|------------------|--------------|-------------------------------|
| Relative humidity | 78% | | | |
| Cloud cover | 5 oktas | | | |
| Rainfall | | | | |
| Rainfall total | 193.2mm/ 7.6in | | | Max: 434.4mm / 17.10in (1996) |
| Cumulative yearly total | 982.7mm/ 38.69in | | | Min: 31.9mm / 1.26in (2012) |
| Maximum | 43.0mm/ 1.69in | 30 th | | |
| Number of rainfall days(≥1mm) | 14 | | | |
| Temperature | | | | |
| Actual maximum | 35.7°C/ 97°F | 15 th | | 35.7°C / 97°F (2020) |
| Actual minimum | 22.9°C/ 73°F | 29 th | | 20.7°C / 70°F (1997) |
| Mean maximum | 33.2°C / 91°F | | 31.8°C/ 90°F | 33.2°C/ 91°F (2020) |
| Mean minimum | 24.3°C / 75°F | | 23.9°C/ 75°F | 21.9°C/ 72°F (1995) |
| Wind | | | | |
| Direction | 200° (south south west) | | | |
| Speed | 03kts/ 06km/h | | | |
| Maximum gust | 26kts/ 48km/h | 15 th | | |
| Sea-level pressure | 1011.7mbs/ 29.88inHg | | 1013mbs | |

REMARKS: climatological normal rainfall- 30-year average (1982-2011) and average temperature revised - 21-year average (1990-2010)

 The total rainfall was slightly less than it's normal. Temperatures were warmer than usual. (Record high temperatures). Trough systems and the Atlantic high-pressure system were the dominant features. Thunderstorms were recorded on 10 days. Flooding in Portsmouth (8th) and Roseau (28th).