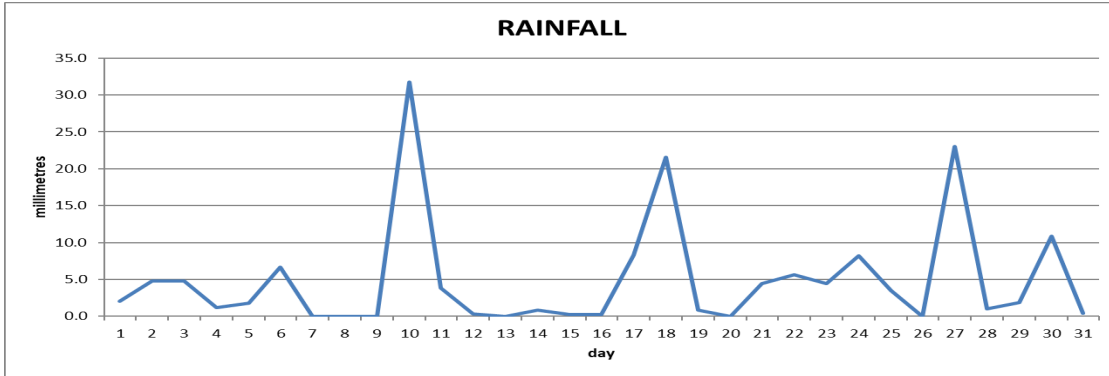
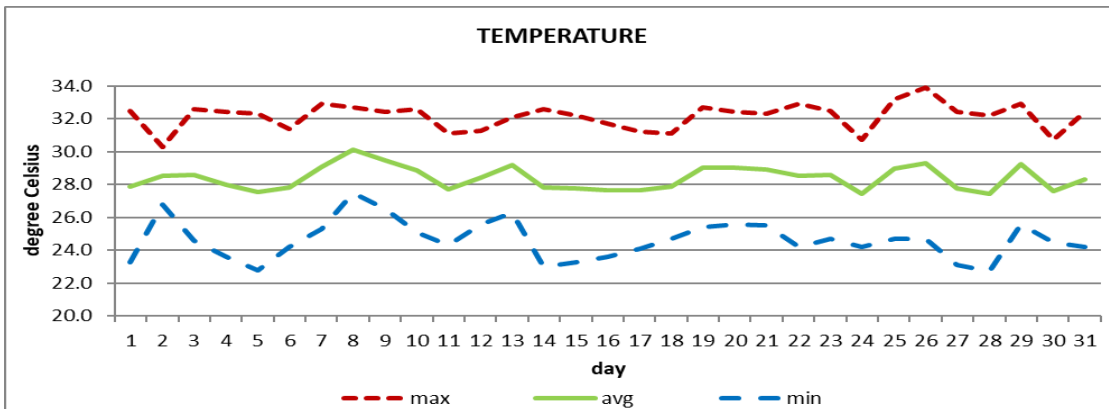


**MONTHLY CLIMATE SUMMARY
CANEFIELD AIRPORT
JULY 2021**



Total	152.4mm/ 6.0in
Normal	231.7mm/ 9.12in
Daily average	4.9mm/ 0.19in



Average	28.4°C/ 82°F
Normal	28.2°C/ 82°F

OTHER

Parameter	Month	Date	Average	Monthly Historical
Relative humidity	70%			
Cloud cover	5 oktas			
Rainfall				
Rainfall total	152.4mm/ 6.0in			Max: 410.6mm / 16.17in (2011)
Cumulative yearly total	611.1mm/ 24.06in			Min: 45.1mm / 1.78in (1994)
Maximum	31.8mm/ 1.25in	10 th		
Number of rainfall days(≥1mm)	19			
Temperature				
Actual maximum	33.9.0°C/ 93°F	26 th		34.5°C / 95°F (1995)
Actual minimum	22.7°C/ 73°F	28 th		20.5°C / 70°F (1989)
Mean maximum	32.1°C / 90°F		31.8°C/ 90°F	32.9°C/ 91°F (2017)
Mean minimum	24.6°C / 77°F		24.5°C/ 77°F	23.2°C/ 73°F (1984)
Wind				
Direction	120° (east south east)			
Speed	05kts/ 09km/h			
Maximum gust	44kts/ 82km/h	2 nd		
Sea-level pressure	1015.2mbs/ 29.98inHg		1013mbs	

REMARKS: Climatological normal -30-year average (1991-2020)

Below normal rainfall total with warm as usual temperatures were recorded. Trough systems, tropical waves and the Atlantic high-pressure system were the dominant features. Hurricane Elsa affected the island on the 2nd. A tropical storm watch issued at 6am was upgraded to a warning at 9am. The warning was discontinued at 6pm. Gusty winds and dust haze were also observed throughout the month. Thunderstorms were recorded on 3 days.