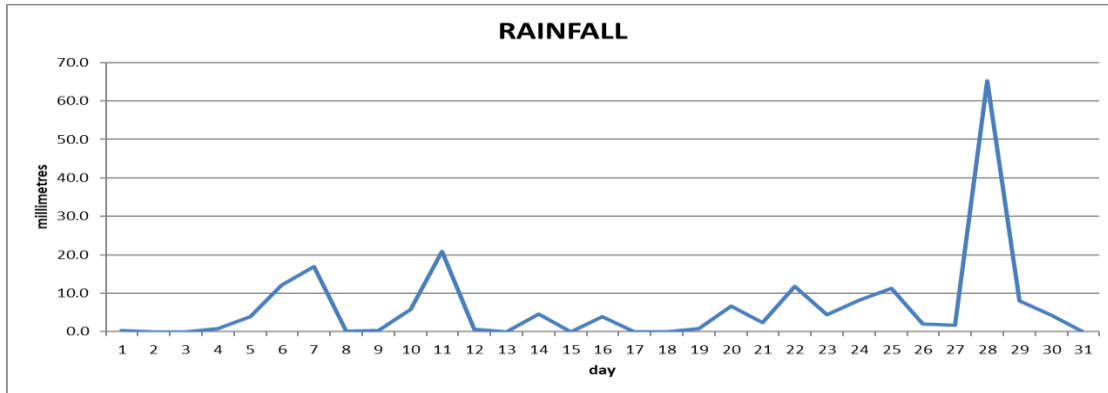
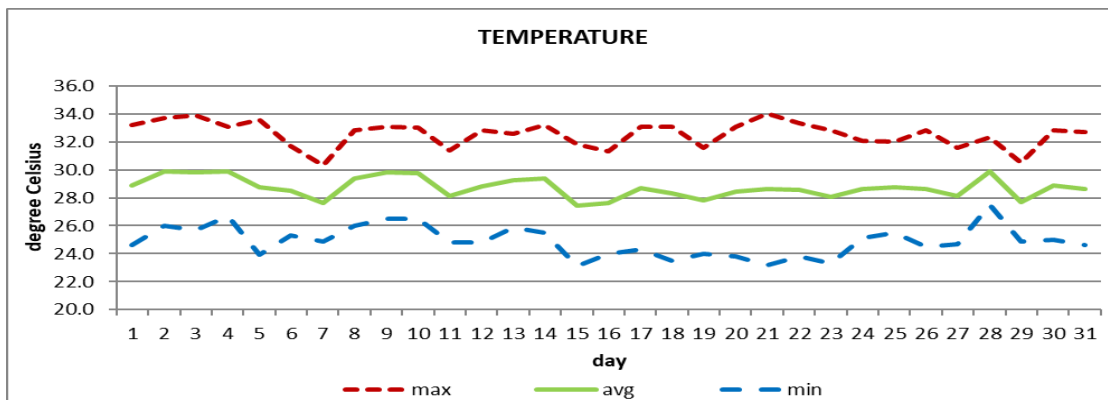


CANEFIELD AIRPORT
JULY 2020



| | |
|---------------|-----------------|
| Total | 197.0mm/ 7.8in |
| Normal | 251.4mm/ 9.90in |
| Daily average | 6.4mm/ 0.25in |



| | |
|---------|--------------|
| Average | 28.7°C/ 84°F |
| Normal | 28.0°C/ 82°F |

OTHER

| Parameter | Month | Date | Average | Monthly Historical |
|-------------------------------|------------------------|------------------|--------------|-------------------------------|
| Relative humidity | 72% | | | |
| Cloud cover | 5 oktas | | | |
| Rainfall | | | | |
| Rainfall total | 197.0mm/ 7.8in | | | Max: 410.6mm / 16.17in (2011) |
| Cumulative yearly total | 618.5mm/ 24.35in | | | Min: 45.1mm / 1.78in (1994) |
| Maximum | 65.3mm/ 2.57in | 28 th | | |
| Number of rainfall days(≥1mm) | 18 | | | |
| Temperature | | | | |
| Actual maximum | 34.0°C/ 93°F | 21 st | | 34.5°C / 95°F (1995) |
| Actual minimum | 23.1°C/ 73°F | 15 th | | 20.5°C / 70°F (1989) |
| Mean maximum | 32.6°C / 91°F | | 31.5°C/ 90°F | 32.9°C/ 91°F (2017) |
| Mean minimum | 24.9°C / 77°F | | 24.5°C/ 77°F | 23.2°C/ 73°F (1984) |
| Wind | | | | |
| Direction | 120° (east south east) | | | |
| Speed | 05kts/ 09km/h | | | |
| Maximum gust | 42kts/ 78km/h | 8 th | | |
| Sea-level pressure | 1013.1mbs/ 29.92inHg | | 1013mbs | |

REMARKS: climatological normal rainfall- 30-year average (1982-2011) and average temperature revised - 21-year average (1990-2010)

Below normal rainfall with warmer than usual temperatures were recorded. (Record high mean temperatures). Trough systems, tropical waves and the Atlantic high-pressure system were the dominant features. Potential Tropical Storm #9 center passed over the south of Dominica on the 29th. Gusty winds and dust haze were also observed throughout the month. Thunderstorms were recorded on 4 days.