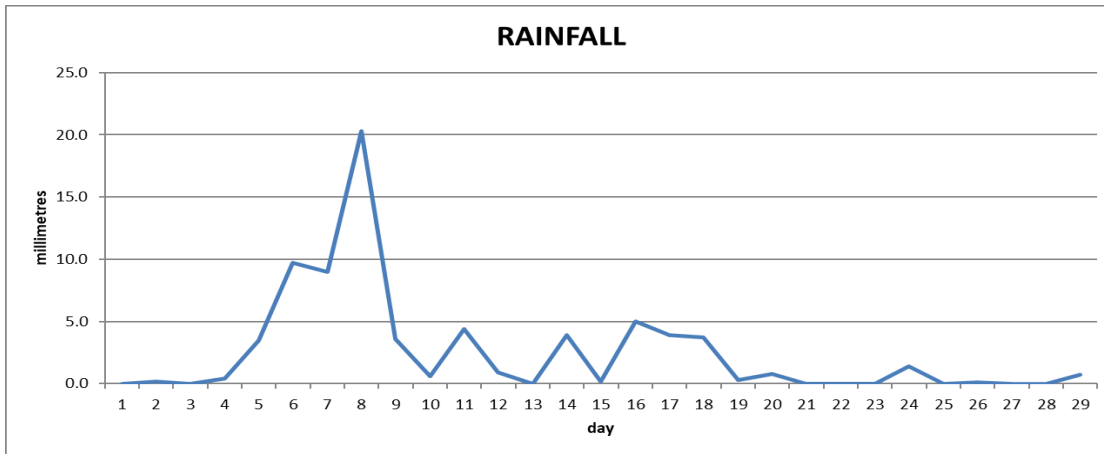
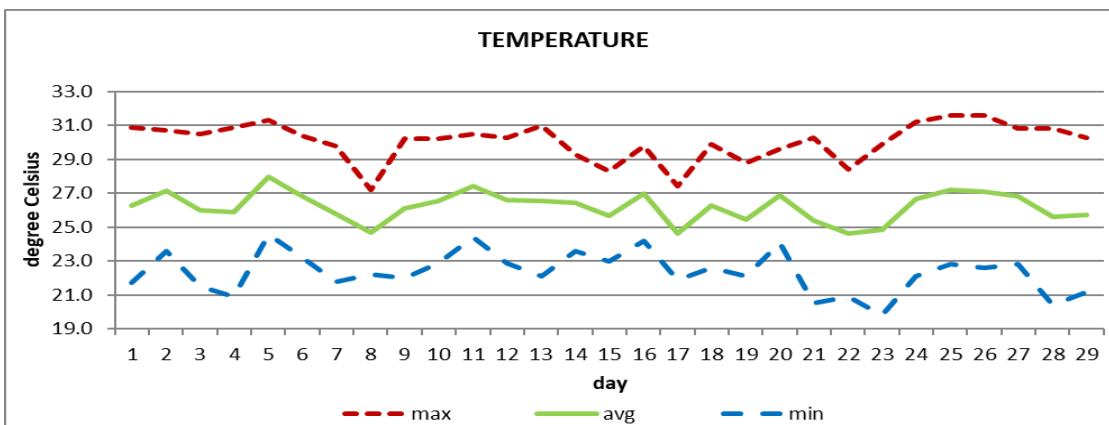


CANEFIELD AIRPORT

February 2020



Total	72.6mm/ 2.9in
Normal	62.1mm/ 2.44in
Daily average	2.5mm/ 0.10in



Average	26.2°C/ 79°F
Normal	25.6°C/ 79°F

OTHER

Parameter	Month	Date	Average	Monthly Historical
relative humidity	71%			
cloud cover	5oktas			
rainfall				Max: 199.2mm/ 7.84in (2018) Min: 0.4mm/ 0.02in (2010)
number of rainfall days (>1mm)	11			
cumulative yearly total	282.4mm/ 11.12in			
maximum	20.3mm/ 0.80in	8 th		
Temperature				
average maximum	30.1°C		29.5°C/ 86°F	30.9°C/ 88°F (1998, 2010)
average minimum	22.4°C		21.6°C/ 72°F	20.9°C/ 70°F (1990, 2009)
maximum	31.6°C/ 90°F	25 th 26 th		32.5°C/ 91°F (2010)
minimum	19.8°C/ 68°F	23 rd		18.0°C/ 64°F (2008)
wind				
direction	140° (south east)			
speed	05kts/ 09km/h			
maximum gust	33kts/ 61km/h	19 th		
sea-level pressure	1015.6mbs/ 29.99inHg		1013mbs	

REMARKS: climatological normal rainfall- 30-year average (1982-2011) and average temperature revised - 21-year average (1990-2010)

The rainfall total was normal with warmer than usual temperatures. The Atlantic high-pressure system and trough systems were the dominant features. Gusty winds were recorded throughout.