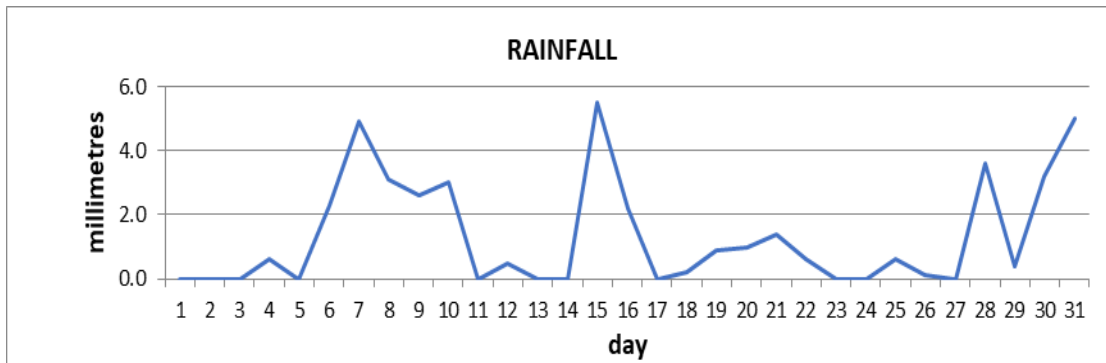
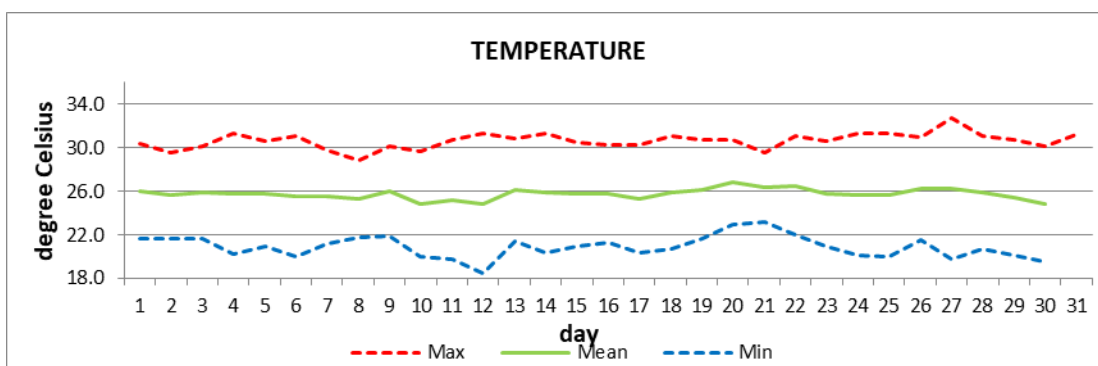


**MONTHLY CLIMATE SUMMARY**
**CANEFIELD AIRPORT  
January 2022**


Total	41.7mm/ 1.64in
Normal	110.4mm/ 4.35in
Daily average	1.64mm/ 0.65in



Average	25.8°C/ 79°F
Normal	25.7°C/ 79°F

**OTHER**

Parameter	Month	Date	Average	Monthly Historical
<b>Relative humidity</b>	65%			
<b>Cloud cover</b>	4 oktas			
<b>Rainfall</b>				Max: 231.9mm/ 9.13in (2018) Min: 29.9mm / 1.18in (2021)
Rainfall total	41.7mm/ 1.64in			
Cumulative yearly total	41.7mm/ 1.64in			
Maximum	5.5mm/ 0.22in	15 <sup>th</sup>		
Number of rainfall days(≥1mm)	12			
<b>Temperature</b>				
Actual maximum	32.7°C/ 91°F	27 <sup>th</sup>		32.7°C / 91°F (2022)
Actual minimum	18.5°C/ 66°F	12 <sup>th</sup>		18.2°C/ 64°F (2008)
Mean maximum	30.7°C / 88°F		29.7°C/ 86°F	30.7°C/ 88°F (2022)
Mean minimum	20.9°C / 70°F		21.7°C/ 72°F	20.7°C/ 70°F (1985)
<b>Wind</b>				
Direction	110° (east south east)			
Speed	04kts/ 07m/h			
Maximum gust	29kts/ 54km/h	8 <sup>th</sup>		
<b>Sea-level pressure</b>	1014.8mbs/ 29.97inHg		1013mbs	

**REMARKS:** Climatological normal -30-year average (1991-2020)

Rainfall was way below normal. Daytime maximum temperature was warmer than usual with a new record set for January. Night-time lows were cooler than usual. The Atlantic high was most dominant. A few troughs and a shearline contributed to rainfall total. High surf advisories and small craft warnings were most common during the first 3 weeks.