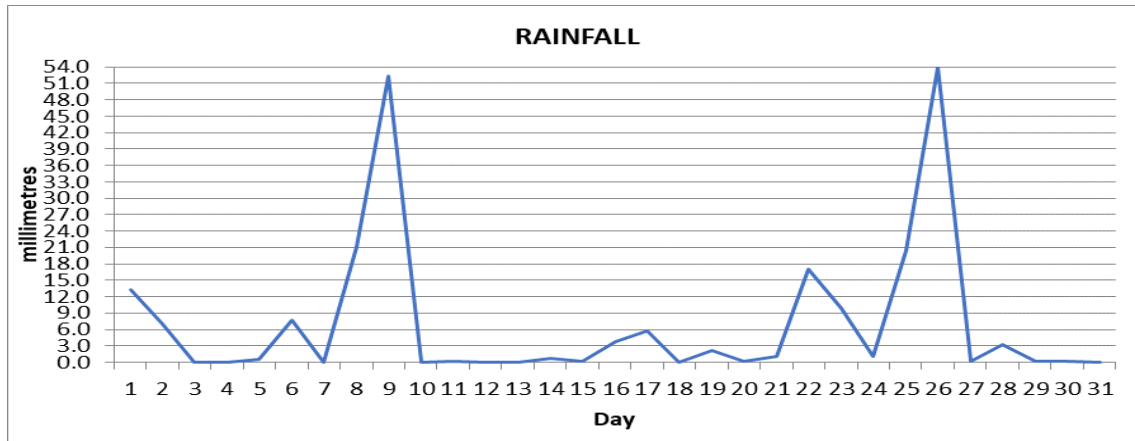
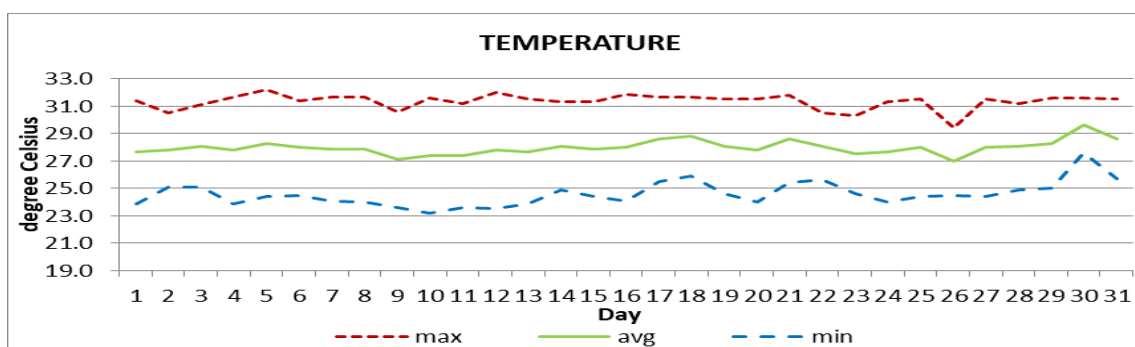


## DOUGLAS - CHARLES AIRPORT

### May 2023



Total	222.0mm/ 8.74in
Normal	244.5mm/ 9.63in
Daily average	7.2mm /0.28in



Average	28.0°C/82°F
Normal	27.1°C/ 81°F

### OTHER

Parameter	Month	Date	Normal	Monthly Historical
<b>Relative humidity</b>	82%			
<b>Cloud cover</b>	5 oktas			
<b>Rainfall</b>				
Rainfall total	222.0mm/ 8.74in			Max: 815.7mm / 32.11in (1987) Min: 12.1mm / 0.49in (2001)
Cumulative yearly total	696.7mm/ 27.43in			
Maximum	53.9mm/ 2.12in	26 <sup>th</sup>		
Number of rainfall days(≥1mm)	15			
<b>Temperature</b>				
Actual maximum	32.2°C / 90°F	05 <sup>th</sup>		33.0°C/ 91°F (2010)
Actual minimum	23.2°C / 73°F	10 <sup>TH</sup>		19.8°C/ 84°F (1984/86)
Mean maximum	31.3°C / 88°F		30.1°C/ 86°F	31.3°C / 88°F (2005,2024)
Mean minimum	24.6°C / 77°F		24.0°C/ 75°F	23.0°C / 73°F (2019)
<b>Sunshine hours</b>				
Average daily duration	08hrs 48mins		8hrs	
Highest daily	11hrs 36mins	01 <sup>st</sup>		
Percentage received	68%			
<b>Wind</b>				
Direction	120° (east south east)			
Speed	07kts / 08mph / 13km/h			
Maximum gust	35kts / 40mph / 65km/h	22 <sup>nd</sup>		
<b>Sea-level pressure</b>	1014.8mbs / 29.97inHg		1013mbs	

**REMARKS:** Climatological normal -30-year average (1991-2020)

The rainfall total was normal. Temperatures were warmer than usual, with highest on record mean and minimum temperatures, as well as, average maximum temperature tied with 2005 for highest on record. Unstable conditions, high pressure system, tropical wave and instability affected the island. Dust haze and gusty winds were observed throughout the month, with two thunderstorm days recorded.